

MUSIC THEATRE OF CONNECTICUT

**MTC MAINSTAGE**



Congratulations  
on another successful  
season!



488 Main Avenue, 3rd Floor  
Norwalk, CT 06851  
203-354-6480

[www.shoffdarby.com](http://www.shoffdarby.com)



# Greg Cole - Piano Tuner/Technician

I offer the exceptional to draw out the best  
[www.gregcolepianotuner.com](http://www.gregcolepianotuner.com)





WE ARE PROUD AND HONORED TO SPONSOR THE  
MUSIC THEATER OF CONNECTICUT'S 36TH SEASON



**SIP  
NOSH  
ENGAGE**



Social Hour | Live Music | Global Food Series

MENTION THIS AD AND GET 15% OFF YOUR NEXT VISIT



be social @blackrocksocialhouse.com

2895 Fairfield Ave, Bridgeport, CT (203) 549-8333





COASTAL BRIDGE  
**ADVISORS**

Family. Wealth. Lifestyle. Retirement.  
**Uncomplicate It.**

Coastal Bridge Advisors  
is a proud supporter of the  
Music Theatre of Connecticut.

We salute their mission to provide  
musical theatre performance and  
training to our community.

---

**[coastalbridgeadvisors.com](http://coastalbridgeadvisors.com)**

54 Wilton Road, Westport, CT 06880  
2121 Avenue of the Stars, Suite 2300, Los Angeles, CA 90067  
203.683.1530 • 800.700.5524

Coastal Bridge Advisors is an Investment Advisor registered with the SEC.

Ameriprise  
Financial



Advice worth  
talking about.™

# Customized advice *that* *changes with your needs.*

Everyone has different financial goals and priorities, and they change and grow as you do. That's why it's important for us to get to know you and understand what you're working toward. Together, we can create a personalized financial plan that fits your needs today and helps you build the tomorrow you deserve.



## **Bunting & Somma**

A private wealth advisory practice of Ameriprise Financial Services, LLC

**203.222.4994, option 1**

2425 Post Rd, Southport, CT 06890

[www.buntingandsomma.com](http://www.buntingandsomma.com)

**Not FDIC or NCUA Insured | No Financial Institution Guarantee | May Lose Value**

Investment advisory products and services are made available through Ameriprise Financial Services, LLC, a registered investment adviser.

Ameriprise Financial Services, LLC. Member FINRA and SIPC.

© 2022 Ameriprise Financial, Inc. All rights reserved.



***MTC always serves up a GREAT season!  
Paulette Oliva and Peter McClung***



Congratulations  
to Kevin Connors  
and Jim Schilling.

You have impacted  
the lives of so many  
and culturally enriched  
even more!

O S T E R I A  
R O M A N A



250 Westport Ave  
Norwalk, CT 06851



MUSIC THEATRE OF CONNECTICUT  
**MTC MAINSTAGE**  
**2022/2023 SEASON**

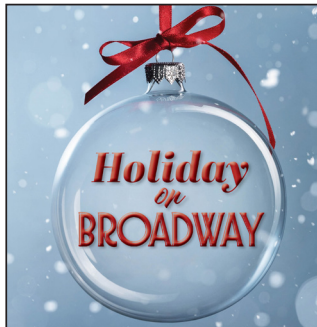
Fairfield County's Professional Award-Winning Theatre  
presents Broadway actors in stunning productions!

November 4-20, 2022



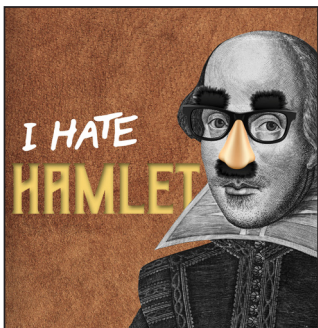
A madcap screwball comedy  
set behind the scenes of  
the 1930s opera world

December 9-18, 2022



Celebrate your holiday with  
MTC's Broadway talent as they  
share your favorite holiday hits

February 3-19, 2023



A hilarious dramatic comedy  
about a TV star cast as the lead in  
Shakespeare's *Hamlet*

March 17 - April 2, 2023



Do the Time Warp again  
with the cult classic musical  
live on stage

**Tickets Now on Sale!**

**203.454.3883 or [musictheatreofct.com](http://musictheatreofct.com)**

**MTC MAINSTAGE** 509 Westport Avenue in Norwalk, CT



September 16 - October 2, 2022

MUSIC THEATRE OF CONNECTICUT  
**MTC MAINSTAGE**

presents



Music by ANDREW LLOYD WEBBER

Book and Lyrics by DON BLACK and CHRISTOPHER HAMPTON

Based on the BILLY WILDER film

with

PAUL AGUIRRE\* PHILIP CALLEN\* HELEN CLARE MATT GRASSO\*  
JEFF GURNER\* LEIGH MARTHA KLINGER\* ELIZABETH WARD LAND\*  
SANDRA MARANTE\* TREVOR MARTIN\* JAMES PATTERSON\*  
EMILY SOLO JACOB SUNDLIE\*

Sound Design by WILL ATKIN Prop Design by SEAN SANFORD

Wig Design by PEGGY DE LA CRUZ Costume Design by DIANE VANDERKROEF

Norma Desmond's Costumes Designed by JIMM HALLIDAY

Lighting Design by RJ ROMEO Scenic Design by LINDSAY FUORI

Fight and Intimacy Coordinator DAN O'DRISCOLL

Stage Managed by ABBEY MURRAY\* Choreography by CORINNE C. BROADBENT

Musical Direction by DAVID JOHN MADORE

Directed by KEVIN CONNORS

\* Members of Actors' Equity Association, the union of professional actors and stage managers in the United States.

Orchestrations by DAVID CULLEN & ANDREW LLOYD WEBBER

Original Production by THE REALLY USEFUL GROUP LTD.

THE REALLY USEFUL GROUP LTD. gratefully acknowledges the role  
of AMY POWERS in the lyric development of SUNSET BOULEVARD.

SUNSET BOULEVARD is presented by arrangement with CONCORD THEATRICALS  
on behalf of THE REALLY USEFUL GROUP. [www.concordtheatricals.com](http://www.concordtheatricals.com)

The 2022/2023 MTC MainStage Season is generously sponsored in part by



THE  
BURY FREDRIK  
FOUNDATION

The State of Connecticut  
Department of Economic and  
Community Development

Connecticut  
still revolutionary



---

---

# CAST

*(alphabetically by actor)*

PAUL AGUIRRE	<i>Morino &amp; Others</i>
PHILIP CALLEN	<i>Mr. Sheldrake &amp; Others</i>
HELEN CLARE	<i>Heather &amp; Others</i>
MATT GRASSO	<i>Mr. Manfred &amp; Others</i>
JEFF GURNER	<i>Cecil B. DeMille &amp; Others</i>
LEIGH MARTHA KLINGER	<i>Joanna &amp; Others</i>
ELIZABETH WARD LAND	<i>Norma Desmond</i>
SANDRA MARANTE	<i>Betty Schaefer</i>
TREVOR MARTIN	<i>Joe Gillis</i>
JAMES PATTERSON	<i>Max Von Mayerling</i>
EMILY SOLO	<i>Mary &amp; Others</i>
JACOB SUNDLIE	<i>Artie Green</i>

## UNDERSTUDY

*For Norma Desmond:* LEIGH MARTHA KLINGER

## SETTING:

TIME: 1949/1950

PLACE: Los Angeles

*SUNSET BOULEVARD will be performed with a 15-minute intermission*

The videotaping, photography, or making of electronic or other audio and/or visual recordings of this production is a violation of United States copyright laws and an actionable federal offense.

## MUSICIANS

*SUNSET BOULEVARD is being played live at every performance  
by the following talented musicians...*

<i>Piano/Conductor</i>	DAVID JOHN MADORE
<i>Keyboard II</i>	TONY BELLOMY
<i>Keyboard III</i>	JEROLD GOLDSTEIN
<i>Bass</i>	RICH ZURKOWSKY
<i>Percussion</i>	NATE DOBAS
<i>Reeds</i>	GARY RUGGIERO

---

---

# THE "SUNSET BOULEVARD" COMPANY



PAUL  
AGUIRRE



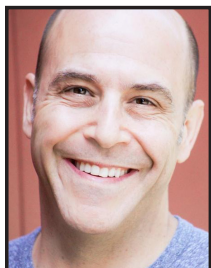
PHILIP  
CALLEN



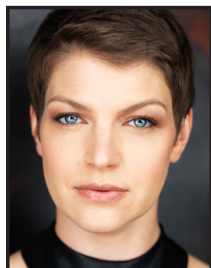
HELEN  
CLARE



MATT  
GRASSO



JEFF  
GURNER



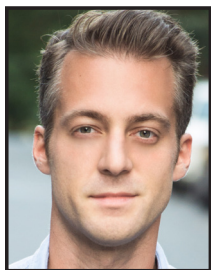
LEIGH MARTHA  
KLINGER



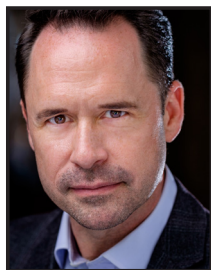
ELIZABETH  
WARD LAND



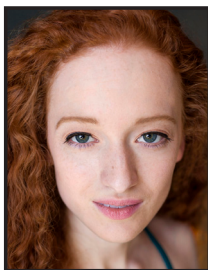
SANDRA  
MARANTE



TREVOR  
MARTIN



JAMES  
PATTERSON



EMILY  
SOLO



JACOB  
SUNDLIE

ROBERT SCIGLIMPAGLIA  
ATTORNEY AT LAW

101 Merritt 7 Corporate Park  
Suite 300  
Norwalk, Connecticut 06851  
Phone: (203) 663-2803  
Fax: (203) 505-6249  
robscig@usa.net  
TAX ID #: 06-1438026

-----  
*Certified Worker's Compensation Specialist*

*Stamford Office:*  
Soundview Plaza  
1266 E. Main Street  
Suite 700R  
Stamford, CT 06902  
Phone: (203) 989-9171

*New York Mailing Address:*  
1177 Avenue of the Americas  
Fifth Floor  
New York, NY 10036  
Phone: (646) 688-4361  
Fax: (646) 365-3364

Admitted in Connecticut and New York  
Practicing since 1991

-----  
Certified Worker's Compensation Specialist  
Personal Injury Law  
Real Estate/Foreclosure  
Entertainment/Trademark/Copyright Law  
-----

*Named #1 Real Estate Attorney in Norwalk by  
legaldirectorate.com*

*Named SUPERLAWYER™ from 2009-2022*

*Named TOP 100 Trial Lawyer by  
National Trial Lawyers Association*

*10.0 Superb Rating on AVVO*

Author of Amazon Best Selling Book:  
*"Voice Over Legal"*

---

---

# MUSICAL NUMBERS

## ACT ONE

“Overture” . . . . . Orchestra  
“Prologue” . . . . . Joe  
“Let’s Have Lunch” . . . . . Joe, Betty, Artie, Sheldrake and Ensemble  
“Surrender” . . . . . Norma  
“With One Look” . . . . . Norma  
“Salome” . . . . . Norma and Joe  
“The Greatest Star of All” . . . . . Max  
“Schwab’s Drugstore” . . . . . Joe, Betty, Artie and Ensemble  
“Girl Meets Boy (*Part 1*)” . . . . . Joe and Betty  
“Girl Meets Boy (*Part 2*)” . . . . . Joe, Betty and Artie  
“New Ways to Dream” . . . . . Joe and Norma  
“The Lady’s Paying” . . . . . Norma, Joe, Manfred and Salesmen  
“The Perfect Year” . . . . . Norma and Joe  
“This Time Next Year” . . . . . Joe, Betty, Artie and Ensemble

### FIFTEEN-MINUTE INTERMISSION

## ACT TWO

“Entr’acte” . . . . . Orchestra  
“Sunset Boulevard” . . . . . Joe  
“There’s Been a Call” . . . . . Norma and Joe  
“As If We Never Said Goodbye” . . . . . Norma  
“Girl Meets Boy (*Reprise*)” . . . . . Joe and Betty  
“A Little Suffering” . . . . . Astrologers, Masseurs, Beauticians, Analyst and Doctor  
“Too Much in Love to Care” . . . . . Betty and Joe  
“New Ways to Dream (*Reprise*)” . . . . . Max  
“The Final Scene” . . . . . Joe, Betty, Norma & Max



**savers**™  
SHOP. REUSE. REIMAGINE.

99 Federal Road in Brookfield, CT  
(203) 775-5910 [stores.savers.com/ct/brookfield](https://stores.savers.com/ct/brookfield)



GREEK & ITALIAN CUISINE

[www.jordansrestaurants.com](http://www.jordansrestaurants.com)

FREE DELIVERY & TAKE OUT

252 Flax Hill Road,  
Norwalk, CT 06854  
(203) 852-0003

DINE IN & TAKE OUT

369 Westport Avenue,  
Norwalk, CT 06851  
(203) 846-9557

“All the world’s a stage...”

*William Shakespeare, As You Like It*

And you’ve  
done it brilliantly!

Wishing everyone at  
Music Theatre  
of Connecticut  
a wonderful season!

The McAree Family



溢香軒  


**Village Gourmet**

THE AUTHENTIC CHINESE FOOD

Tel: (203) 849-8788  
(203) 849-8288

22 Chestnut Hill Road, (Rte 53)  
Norwalk, CT 06851

*(Cranbury Shopping Center, Next to Gregory's Store)*

Business Hours  
Mon. - Thurs.: 11:00 am - 10:00 pm  
Fri. - Sat.: 11:00 am - 11:00 pm  
Sun.: 12:00 noon - 10:00 pm

online order @

[www.chinesefoodnorwalk.com](http://www.chinesefoodnorwalk.com)



---

---

# WHO'S WHO

**PAUL AGUIRRE** (*Morino & Others*) is excited to make his Music Theatre of CT debut. National tours: *Billy Elliot*, *Seussical*, *The Who's Tommy*, *How to Succeed...* and *How the Grinch...* (cast recording) at MSG. Favorites CT credits: *In the Heights* at Westport County Playhouse, *Evita* at ACT, *Jesus Christ Superstar* at 7 Angels Theatre, *The Music Man* at Summer Theatre of New Canaan, and *Bye Bye Birdie*, *Guys and Dolls*, *Li'l Abner* and *Singin' in the Rain* at Goodspeed. Paul is also the creator/owner of BroadwayDollsandGuys.com. Love to David, Nikki and Arya. Paul forever dedicates his work to Ma for her never-ending love and support.

**PHILIP CALLEN** (*Mr. Shelldrake & Others*) is thrilled to be making his MTC debut. He most recently appeared as Sidney Bruhl in *Deathtrap* at Legacy Theatre in Stony Creek. This December, Philip will return to St Paul, MN for his 16th straight season as George Bailey in *It's A Wonderful Life: A Live Radio Play*. He previously appeared in two runs of the NY Times Critic's Pick and Off-Broadway hit *Honky* at Urban Stages. Philip has a long career in the theatre in NYC and in the Twin Cities, Minneapolis and St. Paul. While there, he appeared at the Guthrie Theatre in *1776* and *Pen*, the Illusion Theater in *Bill W. and Dr Bob*, and played 23 roles in *Wellstone!*, based on the life of the late Sen. Paul Wellstone. He also has spent more than 20 years in leadership and fundraising in the non-profit sector, and now serves as a host, emcee, and auctioneer for charity events and non-profits. Philip lives in Norwalk with his wife, Laurie, and their children, Alice and Abraham.

**HELEN CLARE** (*Heather & Others*) MTC Debut! Regional: Lucy Van Pelt in *You're a Good Man, Charlie Brown* and Pit Singer/Darlene U/S in *Honky Tonk Angels* (Summer Theatre Of New Canaan), *Suor*

*Angelica* (Madison Lyric Stage), *Snow White* (Downtown Cabaret). Thank you to Kevin for this wonderful opportunity and to family, mentors, and friends! @itshelenclare itshelenclare.com

**MATT GRASSO** (*Mr. Manfred & Others*) AEA, is a CT based actor who's previous credits include *It's a Wonderful Life: A Live Radio Play* (George Bailey, MTC), *A Christmas Carol: A Live Radio Play* (Jake Laurent's, MTC), *Joseph and the Amazing Technicolor Dreamcoat* (Zebulun, ACT of CT), *The Bridges of Madison County* (Michael Johnson, MTC).

**JEFF GURNER** (*Cecil B. DeMille & Others*) Past MTC appearances include *Tru*, *Ragtime*, *Buddy* and *Falsettoland*. Broadway: *The Lion King*. Off-Broadway/NY: *Chains*, *Five Course Love*, *The London Cuckolds*, *The Man of Destiny*, *The Comedy of Errors*, *The Normal Heart*, *The Truth About Santa*. Regional: Goodspeed Opera House, Gateway Playhouse, Pioneer Theatre Company, St. Louis Rep, Playmakers Rep, Papermill Playhouse, Berkshire Theatre Festival, The Ordway, Mile Square Theatre, South Coast Repertory, The Depot Theatre. TV: *FBI*, *Homeland*, *The Good Wife*, *Nurse Jackie*, *Law & Order: SVU/Criminal Intent*, *Mercy*, *Rescue Me*, *Third Watch*. Jeff is an award-winning audiobook narrator, and has recorded hundreds of voice-overs for television and radio commercials, video games, and animated series.

**LEIGH MARTHA KLINGER** (*Joanna & Others*) is thrilled to be back on stage after these last few years! She was born and raised in Germany, studied Drama in Munich and worked throughout Europe until she finally took the leap and moved to NYC 11 years ago. Favorite credits include *Beauty and the Beast*, *Sunset Boulevard*, *Curtains*, *Cabaret*, *Murder Ballad*, *American Idiot*, *We Will Rock You*, *Rebecca*, *Rudolf-Affair Meyerling*, *Les Miserables*,



**VOLVO CARS WESTPORT**

**GRATEFULLY SUPPORTS**

**MTC** MUSIC THEATRE  
OF CONNECTICUT



**ALL TONIGHT'S GUESTS ENJOY A**

**\$ 200** Store  
Credit

Towards the Purchase of Any New or Used Vehicle

**THINK OF IT AS DINNER ON US NEXT  
TIME YOU'RE COMING TO A SHOW!**

556 Post Rd. E, Westport, CT 06880  
877-421-2113 | [VolvoCarsWestport.com](http://VolvoCarsWestport.com)

---

---

# WHO'S WHO

*Into the Woods, Some Like It Hot.* Love and thanks to my husband Derrick and my incredible family! @leighmarthaklinger

**ELIZABETH WARD LAND** (*Norma Desmond*) Broadway: *Amazing Grace, Memphis, Scandalous, The Scarlet Pimpernel, Passion, City of Angels.* Tours: *Les Miserables, The Music of Andrew Lloyd Webber, Chitty Chitty Bang Bang, Singin' in the Rain.* Off-Broadway: *The Bedwetter, Curvy Widow, Southern Comfort, Green Heart, Hello Again.* Regional: Old Globe, Pasadena Playhouse, Alliance, Geva, Barrington Stage, Pioneer, Theatreworks. Film/TV: *Young Adult, Boy Meets Girl, The Gathering, The Good Fight, Elementary, The Blacklist, Boardwalk Empire, Madam Secretary, Law & Order.* Her Acclaimed Concert, *Still Within The Sound Of My Voice: The Songs Of Linda Ronstadt*, won the 2020 Bistro Award for Outstanding Tribute Show. @elizabethwardland  
www.ElizabethWardLand.com

**SANDRA MARANTE** (*Betty Schaefer*) Music Theatre of CT debut and thrilled to be part of this wonderful cast! Select Credits: *Radio City Music Hall Christmas Spectacular* starring the Rockettes, *In the Heights* (Broadway at Music Circus, Westport Country Playhouse, Playhouse on Park), *Stonewall* (NYC Opera, Lincoln Center), *Smokey Joe's Cafe* (Ivoryton Playhouse), *Man of La Mancha* (Princeton Festival), TV: *Bull* (CBS), *Quiero Ser Estrella* (Univision) *Evil Lives Here* (Hulu). Graduate of New World School of the Arts (BM), Roosevelt University (MM), UCONN (Artist Diploma). I love you to the moon and back my baby boy Phoenix and husband Kami! Social: ig sandra\_marante

**TREVOR MARTIN** (*Joe Gillis*) Regional: *Sweeney Todd* (Sweeney Todd), *Beauty & the Beast* (Beast), *Les Misérables* (Javert), *White Christmas* (Bob Wallace), *Guys &*

*Dolls* (Sky Masterson), *Camelot* (Arthur), *West Side Story* (Riff), *End of the Rainbow* (Anthony), *See What I Wanna See* (Man #1), *The Sound of Music* (Captain Von Trapp). International: (Upcoming) *The Sound of Music* (Captain Von Trapp) - Broadway International Group. Additional Credits: Lotte Lenya Vocal Competition Winner, American Traditions Vocal Competition Semi-Finalist, MM University of Houston. @trevor\_andrew\_martin

**JAMES PATTERSON** (*Max Von Mayerling*) Broadway/National Tours: *Gigi; Mary Poppins; The Drowsy Chaperone; Beauty and the Beast; Cats;* and *State Fair.* Other credits: Georges in *La Cage Aux Folles* (Riverside Theatre, Pioneer Theatre Co.); Don Quixote in *Man of La Mancha* (Stages St. Louis); Lumiere in *Beauty and the Beast* (TUTS, Fulton Theatre, MSMT); *Le Comte Ory* (Metropolitan Opera); Barnaby Slade in *Sail Away* (Carnegie Hall); and Rev. Moore in *Footloose* (Fulton Theatre). Website: jamespattersontheactor.com. Thanks to CGE, and BJH.

**EMILY SOLO** (*Mary & Others*) is a versatile singer/actress recognized for her fearless performances in musicals, opera, plays, and film. Recently: *The Sound of Music* with Charlottesville Opera (Liesl); *Infinite Energy* (New Camerata Opera/Dixon Place); Candlelight Orchestra *Greatest Showman* Tour (Soloist). Other favorites: *A Christmas Carol* (McCarter Theatre), *Threepenny Opera* (Everyman Rep), *Hamlet* (Camden Shakespeare Festival). IG: @emmsolo  
www.emilysolo.com

**JACOB SUNDLIE** (*Artie Green*) Previously appeared in MTC's *Ragtime*. Jacob's previous professional credits include: Shawnee Playhouse, Weathervane Playhouse, Carousel Music Theater, and NCC Theatre, as well

# Design with Inspiration

Visit our Greenwich Design Center to experience Fairfield and Westchester Counties' leading supplier of luxury architectural hardware



**INTERSTATE + LAKELAND LUMBER**

*A Century of Excellence*

760 Post Rd E, Westport, CT (203) 226-3321 [interstatelumber.com](http://interstatelumber.com)



---

---

# WHO'S WHO

as producing and directing *I and You* in Manhattan. Jacob is appreciative of this opportunity.

**KEVIN CONNORS** (*Director, Executive Artistic Director & Co-Founder*) Off-Broadway: Off-Broadway: *Play Like a Winner* (NYMF award-winner), *Prime Time Prophet*, *Jukebox Saturday Night*, *The Abandoned Loves of Frederick R.*, *Life Anonymous*, *Lover: The Valentino Musical*, *Babes Off Broadway*, *Saloon* and *Suzy Q*. Selected regional productions: *The Fantasticks*, *It's a Wonderful Life: A Live Radio Play*, *Babes in Toyland*, *A Christmas Carol* and *Baby*; with such stars as Joan Rivers, James Naughton, and Johnny Mathis. He has directed over 150 MTC Equity MainStage productions including *Next to Normal*, *Lady Day at Emerson's Bar and Grill*, *Falsettoland*, *Ragtime*, *Cabaret*, *Little Shop of Horrors*, *Evita*, *Doubt*, *Master Class*, *Gypsy*, (all Connecticut Critics' Circle Award Nominations/Winners), and *It's a Wonderful Life: A Live Radio Play*, (Moss Hart Award Winner). BroadwayWorld Award Winner as Best Director for MTC's *Cat on a Hot Tin Roof*, Multiple Connecticut Critics' Circle Best Director winner including MTC's *Ragtime* and *Falsettoland*, and two-time recipient of the Tom Killen Award for Outstanding Contribution to Connecticut Professional Theatre. As a composer he has penned the score for numerous musicals including *It's a Wonderful Life: A Live Radio Play*, *A Christmas Carol: A Live Radio Play* and *The Great Gatsby: A Live Radio Play* (all published by Playscripts, Inc.), and served on the faculties of The Hartt School of Music/University of Hartford, Sacred Heart University, the University of Bridgeport and Musical Theatre Works in NYC. [www.kevin-connors.com](http://www.kevin-connors.com)

**ANDREW LLOYD WEBBER** (*Composer*) has composed the scores of some of the world's most famous musicals. From *Joseph*

and the *Amazing Technicolor Dreamcoat* (1969) to *Cinderella* (2021), his work has been consistently seen on world stages. Before the COVID pandemic hit, Lloyd Webber had shows continually running in the West End for 48 years and on Broadway for 41. When *Sunset Boulevard* joined *School Of Rock*, *Cats* and *The Phantom Of The Opera*, he equalled Rodgers & Hammerstein's record of four shows running simultaneously on Broadway. He is one of the select group of artists with EGOT status, having received Emmy, Grammy, Oscar and Tony Awards. Lloyd Webber owns seven London theatres, including the iconic London Palladium and Theatre Royal, Drury Lane. Over the past three years the latter has been completely restored and renovated at a cost of over £60 million. It is one of the biggest projects ever undertaken by a private theatre owner in recent times. His mantra that every penny of profit made from his theatres is ploughed back into the buildings has meant that considerable work has been undertaken across his theatre portfolio during the pandemic, including the complete remodelling and reseating of the Gillian Lynne. Lloyd Webber is passionate about the importance of musical education and diversity in the arts. The Andrew Lloyd Webber Foundation provides 30 performing arts scholarships every year for talented students with financial need and supports a range of projects such as the Music In Secondary School Trust and commissioning research into diversity in theatre. Andrew Lloyd Webber was knighted in 1992 and created an honorary life peer in 1997. To mark his 70th birthday, his bestselling autobiography *Unmasked* was published by Harper Collins in March 2018.

**DON BLACK** (*Book & Lyrics*) received two Tony Awards for best book and lyrics of a musical for his work (with Christopher Hampton) on *Sunset Boulevard*, which marked

# TRANSPARENCY. PARTNERSHIP. ALIGNMENT.

GREG BAEKEY AND MATTHEW WUNDER ARE PROUD TO SUPPORT

MUSIC THEATRE OF CONNECTICUT FOR THE PAST 9 YEARS!

Most financial companies want you to invest in them. We'd rather invest in you.



**Gregory Baekey**

CLU®, ChFC®  
203-221-5205  
gregorybaekey@nm.com  
274 Riverside Avenue, Ste. 4  
Westport, CT 06880



**Matthew Wunder**

CLU®, CFP®  
203-659-4010  
matthewwunder@nm.com  
274 Riverside Avenue, Ste. 4  
Westport, CT 06880

---

07-1016 © 2022 Northwestern Mutual is the marketing name for The Northwestern Mutual Life Insurance Company (NM) (life and disability insurance, annuities, and life insurance with long-term care benefits) and its subsidiaries. Subsidiaries include: **Northwestern Mutual Investment Services, LLC (NMIS)** (investment brokerage services), a registered investment adviser, broker-dealer, and member of FINRA and SIPC. Northwestern Mutual Wealth Management Company® (NMWMC) (investment advisory and trust services), a federal savings bank. **Not all Northwestern Mutual representatives are advisors. Only those representatives with "advisor" in their title or who otherwise disclose their status as an advisor of NMWMC are credentialed as NMWMC representatives to provide investment advisory services.** NM and its subsidiaries are in Milwaukee, WI. Members of Wunder Financial use Wunder Financial as a marketing name for doing business as representatives of NM. Wunder Financial is not a registered investment adviser, broker-dealer, insurance agency or federal savings bank. To view detailed disclosures regarding individual representatives, view their information at wunderfinancial.nm.com.



---

# WHO'S WHO

his third collaboration with Andrew Lloyd Webber. They first joined forces to write the song cycle *Tell Me On A Sunday* which developed to form the basis of the stage show *Song and Dance*. They were reunited again for *Aspects of Love*. He also wrote the lyrics for the Andrew Lloyd Webber-produced *Bombay Dreams*. Awards include an Oscar for his song "Born Free," five Academy Award nominations, two Tony Awards and three Tony nominations, six Ivor Novello Awards, a Golden Globe and many platinum and gold discs. He has written a quintet of James Bond theme songs: "Thunderball," "Diamonds Are Forever," "The Man With The Golden Gun," "Surrender" from *Tomorrow Never Dies* and "The World Is Not Enough." Among his many popular songs are two U.S. number ones, "Ben" for Michael Jackson and "To Sir With Love" for Lulu. He was inducted in the Songwriters Hall of Fame in 2008 and recently honoured in London with a BMI Icon award. Don also received the Order of the British Empire in the Queen's honours list. Don's musical, *Mrs Henderson Presents*, opened in Toronto in March 2017. Don is also a regular broadcaster and has his own show on Radio Two.

**CHRISTOPHER HAMPTON** (*Book & Lyrics*) works for the stage include original plays (*Appomattox*, *The Talking Cure*, *White Chameleon*, *Tales from Hollywood*, *Treats*, *Savages*, *The Philanthropist*, *Total Eclipse* and *When Did You Last See My Mother?*); plays adapted from novels (Ödön von Horváth's *Youth Without God*, Sándor Márai's *Embers*, *Alice's Adventures Under Ground* and Laclós' *Les Liaisons Dangereuses*); musicals (*Sunset Boulevard*, *Dracula: The Musical* and, most recently, *Stephen Ward*, all with Don Black); libretti (*Waiting for the Barbarians*, *Appomattox* and *The Trial*, all with composer Philip Glass); and many translations (Chekhov, Ibsen, Molière, Horváth, Yasmina Reza and Florian Zeller).

Hampton's screenplays include *Ali and Nino*, *Perfect Mothers* (called *Adore* in the U.S., based on Doris Lessing's *The Grandmothers*), *A Dangerous Method* (based on his play *The Talking Cure*), *Chéri* (from the novel by Colette), *Atonement* (from the novel by Ian McEwan), *Imagining Argentina* (which he also directed), *The Quiet American* (from the Graham Greene novel), *The Secret Agent* (from Joseph Conrad's novel, and which he also directed), *Mary Reilly*, *Total Eclipse*, *Carrington*, *Dangerous Liaisons*, *The Good Father*, *The Honorary Consul*, *Tales from the Vienna Woods* and *A Doll's House*. His television scripts include mini-series *The Ginger Tree*, *Hôtel du Lac*, *The History Man*, *Able's Will* and most recently *The Thirteenth Tale*, starring Vanessa Redgrave and Olivia Colman,

**BILLY WILDER** (*Co-Writer and Director of 1950 Film*) [1906–2002] was an Austrian-born American filmmaker, screenwriter, producer, artist, and journalist whose career spanned more than five decades. He is regarded as one of the most brilliant and versatile filmmakers of the Hollywood Golden Age of cinema. With *The Apartment*, Wilder became the first person to win Academy Awards as producer, director, and screenwriter for the same film. Wilder and I.A.L. Diamond began collaborating in 1957. Beginning with *Love in the Afternoon*, their partnership spanned 25 years and a dozen critically acclaimed films, including *Merry Andrew*; *Some Like It Hot* (an Oscar nomination); *The Apartment*; *One, Two, Three*; *Irma La Douce*; *Kiss Me, Stupid*; *The Fortune Cookie* (a second nomination); *The Private Life of Sherlock Holmes*; *Avanti!*; *Fedora* and *Buddy Buddy*.

**WILL ATKIN** (*Sound Designer*) is very excited to begin his third Season with MTC, previously running sound for *Jekyll & Hyde*, *Always... Patsy Cline*, *Cabaret*, and *Ragtime* to name a few. He has stage managed A



Your Inspiration. Our Expertise.

Lumber | Building Materials | Decking & Fencing  
Windows & Doors | Moulding | Kitchens  
Architectural Hardware | Paint & Design

RingsEnd.com | 800-390-1000



SAUGATUCK  
COMMERCIAL  
REAL ESTATE LLC

LICENSED IN CT, NY, MA, RI, NH, FL

9 Burr Road  
Westport, CT 06880  
203.222.4190  
www.saugatuckcommercial.com  
Proud members of ICSC, NEFA, REFA, WBENC



FULL-SERVICE COMMERCIAL REAL ESTATE BROKERAGE

SCRE IS PLEASED TO CONTINUE ITS SUPPORT OF MTC



**Here's to Another Terrific Season of  
Top-Notch Performances!**

---

---

# WHO'S WHO

*View from the Bridge* (Westport Community Theatre), played Riff in *West Side Story* (Wilton Playshop). Will has a degree in Audio & Music Production, with a focus in jazz trombone from Western Connecticut State University.

**CORINNEC. BROADBENT** (*Choreographer*) is thrilled to make her choreographic debut with MTC! Some credits include: *The Little Mermaid*, *Hairspray*, *James and the Giant Peach*, *Legally Blonde*, *Charlie Brown* and *The Wizard of Oz!* Recently she performed with MTC as Trina in *Falsettoland*. Thanks to Allan, Phaedra, Grayson, Skye, Shea, Daniel, Kevin and Jim!

**LINDSAY FUORI** (*Scenic Designer*) is a Manhattan based Scenic Designer. Recent credits include: *Le nozze di Figaro* (Intermountain Opera), *A Midsummer Night's Dream* (Commonwealth Shakespeare Company), and *Made by God* (Irish Repertory Theatre). She received a Henry Award from the Colorado Theatre Guild for her work on *Hazardous Materials* (Creede Repertory Theatre). [lindsayfuori.com](http://lindsayfuori.com)

**DAVID JOHN MADORE** (*Musical Director*) is thrilled to be back, where he last music directed *Fun Home*. He recently music directed the *Seussical* Broadway 21st Anniversary Concert at 54 Below, *Falsettoland* at Music Theatre of Connecticut, and Siren's Den at The Cutting Room, having just previously music directed and conducted the workshop of *Moms: the Musical* (live and online). Other credits: *Les Miserables*; *Seussical* (Broadway); *The Fantasticks*; *Newsical the Musical*, *Cross That River*; *Prison Dancer*; *Peace Love and Cupcakes*; *Flight School* (Off-Broadway); *Daniel Tiger's Neighborhood Live!*; *Man of La Mancha* (National Tour); *Sunday In the Park With George*; *A Chorus Line*; *Joseph and the Amazing Technicolor Dreamcoat* (Arvada

Center); *Mamma Mia* (Ivoryton); *The World Goes Round* (Music Theatre of Connecticut); *South Pacific*, *The Who's Tommy*; *Les Miserables*; *Happy Days*; (West Virginia Public Theatre); *Dear World*; *Red, Hot & Blue*; *On the Twentieth Century* (Goodspeed); *Sweet Charity*; *The Game* (Barrington Stage); *Man of La Mancha*; *The Sound of Music*; *Smokey Joe's Cafe* (Sacramento Music Circus); *Fun Home*; *Violet* (Spotlight Theatre Co.) [www.madoremusic.com](http://www.madoremusic.com)

**ABBEY MURRAY** (*Production Stage Manager*) is so excited to be stage managing for MTC! Abbey is a recent graduate of Western Connecticut State University with a degree in Stage Management and Design Technology. She recently made her Off-Broadway debut as the PSM for *Reverse Transcription!* She'd like to thank her loved ones for their endless support!

**DAN O'DRISCOLL** (*Fight and Intimacy Coordinator*) On Broadway: Associate Fight Director for *American Buffalo*, *Hangmen* and *Pass Over*; Fight Consultant on *Clyde's*; Assistant Fight Director on 10 other productions. Selected Off-Broadway credits: Fight Director on *HIR* for Playwrights Horizons; *Picnic*, *Summer and Smoke* and *Come Back, Little Sheba* for Transport Group; *Lost Girls* for MCC. For MTC: *Sylvia*, *Ragtime*, *Cabaret*, *Jekyll & Hyde*, *End of the Rainbow* and *Sleuth*. Intimacy Director/Actor Advocate for the Maryland Renaissance Festival.

**RJ ROMEO** (*Director of Production / Lighting & Projection Designer*) is the current Technical Director/Associate Director of Production at Westport Country Playhouse, and returns to MTC for his third season as DP and fourth season as resident lighting designer. He was a CT Critics' Circle nominee for Best Projection Design for last season's *The Mountaintop*, and other past MTC credits include *Cabaret*, *Ragtime*, *Steel Magnolias*,

# WHO'S WHO

*Fully Committed, RFK, Becoming Dr. Ruth, Tru, Tenderly, Buddy, and Falsettoland.* In addition, RJ has designed lighting for countless regional productions such as *Guys and Dolls, Twelfth Night*, and most recently *Frozen Jr.*

**SEAN SANFORD** (*Prop Designer*) is a Prop Designer and Theater Artist based in NYC. Previously at MTC Sean was the Props Supervisor and Scenic Charge for *Tru*. Other credits include Assistant Prop Supervisor at Westport Country Playhouse, New York Theater Workshop, and the Classical Theater of Harlem, he is also on the Props team at *Blue Man Group*, NYC. Sean is thrilled to be back making Theater with MTC. To see more of his work go to [seansanforddesign.com](http://seansanforddesign.com)

**JIM SCHILLING** (*Managing Director, Co-Founder*) co-founded Music Theatre of CT in 1987 and is currently MTC's Managing Director and Director of the School of Performing Arts. MTC acting credits include *Jacques Brel is Alive and Well...*, *Three Guys Naked from the Waist Down*, *Yours, Anne, It's a Wonderful Life: A Live Radio Play*, *Doubt, Almost, Maine, God of Carnage, The Fantasticks, Vanya and Sonia and Masha and Spike, The 39 Steps, Cat on a Hot Tin Roof* and most recently, *Sylvia*. He was nominated for a CT Critics Circle award for Herr Shultz in *Cabaret* and winner of the BroadwayWorld award for *Cat on a Hot Tin Roof*. He continues as a Blue Ribbon Panelist for the Daytime Emmy Awards, and is on the voting committee for the SAG awards, and a member of "Who's Who in the American Theatre" from 1991-present. Jim was also an adjunct professor at Sacred Heart University (Advanced Acting, Advanced Scene Study, Script Analysis and Directing) where he was recently nominated Best Director of a musical for his work on *Godspell*.

**DIANE VANDERKROEF** (*Costume Design*) has been the resident costume designer for MTC MainStage and MTC School of Performing Arts since 2006. In the past she also worked with Kevin Connors on *Babes in Toyland* at the Stamford Center for the Arts. She did designs for the Connecticut Grand Opera, including *Elixir of Love, Don Giovanni* and *Don Pasquale*. She has also been designer for Downtown Cabaret Theatre's MainStage and Children's Company, as well as various musicals for New England Lyrical Operetta. When not designing, Diane is a flight attendant for Delta Airlines.

**ACTOR'S EQUITY ASSOCIATION (AEA)** was founded in 1913, AEA represents more than 50,000 actors and stage managers in the United States. Equity seeks to advance, promote and foster the art of live theatre as an essential component of our society. Equity negotiates wages and working conditions, providing a wide range of benefits, including health and pension plans. AEA is a member of the AFL-CIO, and is affiliated with FIA, an international organization of performing arts unions. The Equity emblem is our mark of excellence. [www.actorsequity.org](http://www.actorsequity.org)

Follow MTC on social media  
for behind-the-scenes photos,  
exclusive offers and more!

 [facebook.com/MusicTheatreCT](https://www.facebook.com/MusicTheatreCT)

 @musictheatrect

 @MusicTheatreCT

---

---

# WHO'S WHO

## MUSIC THEATRE OF CONNECTICUT

Executive Artistic Director .....	KEVIN CONNORS
Managing Director .....	JIM SCHILLING
Director of Production .....	RJ ROMEO
Box Office Manager & Administrative Manager .....	ALEX MONGILLO
Marketing & PR Consultant .....	JOE LANDRY
Cabaret Liaison .....	RAISSA KATONA BENNETT
Resident Scenic Designer .....	LINDSAY FUORI
Resident Costume Designer .....	DIANE VANDERKROEF
Resident Lighting Designer .....	RJ ROMEO
Resident Sound Designer .....	WILL ATKIN
Assistant Stage Manager .....	KEVIN CONNORS
Front of House Staff .....	STACY MILLER & NANCY SCIGLIMPAGLIA
MTC School Faculty .....	KEVIN CONNORS, ELISSA DEMARIA, ALEXANDRA FORTIN, DEBORAH LEVY, TRACEY MARBLE, ALEX MONGILLO, JIM SCHILLING, ERIN WILLIAMS
Board of Directors .....	DAN ARON, GREG COLE, KEVIN CONNORS, MARK CORPRON, IRENE DIXON, WENDY GERBIER, DAN GULLER, JACKIE HALL, JOHN HAMLIN, PETER McCLUNG, PAULETTE OLIVA, MARISA PARROTTA, BILL PIERZ, HENRY C. RAPP III, JIM SCHILLING, PETE SPERA, GREG SWEENEY

### FOR SUNSET BOULEVARD

Dance Captain .....	PAUL AGUIRRE
Production Assistants .....	MARGOT WEISS & SETH SCHMIDT

### SPECIAL THANKS

Dan and Maureen Aron  
John Hamlin and Greg Cole  
Lou Ursone and Curtain Call  
Westport Country Playhouse  
Senator Richard Blumenthal  
Congressman Jim Himes  
Mayor Harry Rilling  
Senator Bob Duff

**And a very special thanks to the Mac-Hayden Theatre in Chatham, New York**

# Gold's DELICATESSEN

421 Post Road East, Westport  
(203) 227-0101

Dine In • Take Out • Custom Catering



# SCAP

CHRYSLER • DODGE • JEEP • RAM



CONNECTICUT'S WRANGLER HEADQUARTERS

[WWW.SCAPCHRYSLERJEEP.COM](http://WWW.SCAPCHRYSLERJEEP.COM)

# TRULY GREEK

NORWALK, CT





Home Team Advantage  
AT COMPASS

Exceptional Real Estate Advisors  
in Fairfield County

## WHO'S WHO IN THE CAST



Joan Wright



Ellen Fusco



John Foran



Ginny Kelly

**“YOUR HOME IS OUR STAGE”**

HomeTeamAdvantage@Compass.com

203.247.5868

**COMPASS**

Home Team Advantage is a team of real estate licensees affiliated with Compass Connecticut, LLC, a licensed real estate broker and abides by Equal Housing Opportunity laws.

banners pocketfolders  
event signage copies menus magnets  
raffle tickets  
business cards  
manuals invitations flyers notepads  
postcards eddm labels printing  
direct mail calendars  
envelopes letterheads  
posters wedding brochures  
stickers post-it pads  
promotional products



*A Norwalk institution that's been getting it right for over 30 years!*

TRADITIONAL & DIGITAL PRINTING  
FULL SERVICE COPY CENTER  
LARGE FORMAT PRINTING

167 Main Street, Norwalk, CT 06851

T: 203.838.2795 | E: [Norwalk@MinutemanPress.com](mailto:Norwalk@MinutemanPress.com)

[Norwalk.MinutemanPress.com](http://Norwalk.MinutemanPress.com) | [Facebook.com/MMPNorwalk](https://www.facebook.com/MMPNorwalk)

# We can't do it without you!

Music Theatre of Connecticut gratefully acknowledges the support of the following individuals, foundations and corporations.

## FOUNDATION SUPPORT

The Adolph and Ruth Schnurmacher Foundation  
The Amalia and Nicola Giuliani Fund  
The Burry Fredrik Foundation  
The Dunagan Foundation, Inc.  
Fairfield County Community Foundation  
The GE Foundation  
General Atlantic Philanthropic Foundation  
Renaissance Charitable Foundation Inc.  
The Robert W. Baird Foundation  
TD Bank Charitable Foundation

## CORPORATE SUPPORT

BTIG  
Connecticut Department of Economic and Community Development  
Eversource Energy  
Hearst Connecticut Media Group  
The Hour  
The IBM Corporation  
Levin Capital Strategies  
Melissa & Doug  
Mizuho Investments  
People's United Bank  
RBC  
Shoff-Darby Insurance  
The Westport Inn

The 2022/2023 MTC MainStage Season is generously sponsored in part by



The State of Connecticut  
Department of Economic and  
Community Development



Connecticut  
still revolutionary



THE  
BURRY FREDRIK  
FOUNDATION





# THE RIDGEFIELD PLAYHOUSE

Non-profit 501 (C) (3)

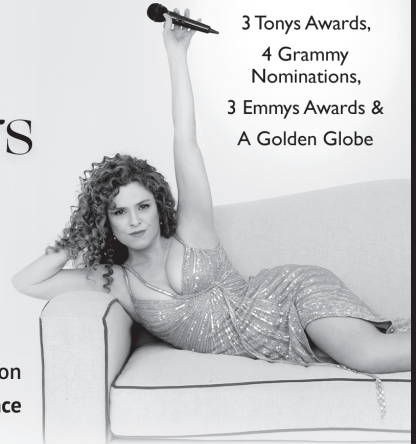
## FALL GALA WITH Bernadette Peters

Honoring  
Executive Director  
Allison Stockel

NOVEMBER 4, 2022

5:30PM Gala | Seated Dinner, Open Bar, Silent Auction

8PM Live Auction, Dedication Ceremony & Performance



3 Tonys Awards,  
4 Grammy  
Nominations,  
3 Emmys Awards &  
A Golden Globe

### ALSO COMING UP!

One-Man  
Musical Memoir  
Featuring more than  
20 Sinatra Songs!



AS SEEN  
ON  
PBS

**my Sinatra**  
*Starring Cary Hoffman*

**OCTOBER 2 @ 4PM**



**The Boomer Boys**  
*Musical*

with Billy Van Zandt  
and the Original Off-Broadway Cast

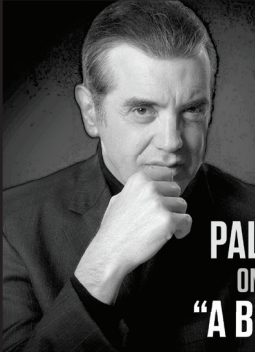
**OCTOBER 9 @ 4PM**

2022 EMMY® NOMINEE



**Randy Rainbow**  
*The Pink Glasses Tour*

**OCTOBER 26 & 27 @ 7:30PM**



**CHAZZ  
PALMINTERI'S  
ONE MAN SHOW  
"A BRONX TALE"**

**NOVEMBER 19 @ 8PM**

203.438.5795 • RIDGEFIELDPLAYHOUSE.ORG

---

---

## 2022/2023 MAINSTAGE SEASON MEMBERS

*as of 9/1/2022*

### **HERO**

*(\$10,000+)*

### **ANGEL**

*(\$5,000 to \$9,999)*

John Hamlin & Greg Cole

### **EXECUTIVE PRODUCER**

*(\$2,500 to \$4,999)*

Marty Resnick

### **PRODUCER**

*(\$1,000 - \$2,499)*

Barbara McAree

### **DIRECTOR**

*(\$500 to \$999)*

Amy Griffin

Mimi Roth

Kathleen Walsh

### **DESIGNER**

Nancy Brown

Karen Como

Molly Alger

and Jay Dirnberger

Mary Gladden

Jeanne Gnuse

Jean Kelly

Joan Pendergast

Joan Wright

### **ACTOR**

*(\$100 to \$249)*

Durelle Alexander

Elizabeth Auber

Stephen Bistran

Sharon Poole

and Michael Bittenbender

Jerome H. Ewing

Joanne Fuss

Joannie Greene

Susan Haefner

Joanne Koleszar

Mary Beth Mollica

Penny Palmer

Margo Parson

Bruce Peabody

Marcia Powell

Stephanie Rival

Annette Sandt

Carol Schnaer

Diane & Steven Shaby

Nancy Usic

Joan and Marshall Weiss

Elizabeth Wernqvist

## CONTRIBUTORS BETWEEN 9/1/2021 AND 9/1/2022

*(Includes Members from past MainStage Seasons)*

Randy Adams

Rohan Agrawal

Oluseyi Alege

Durelle Alexander

Belkis Almonte

Meryl Alpert

Lawrence Altman

Larry Altman

& Greg Rayner

Nicholas Amico

Mary Antonucci

Jim Arata

Carolyn & Gavin Arneth

Dan Aron

Anna Aron

Maureen Aron

Ashley Aron

Alexa Aron

Deb Price

Cliff Atlas

Nabil A. Atweh, MD

Gail Marion Ayotte

Gregory Baekey

William Bales

Susan Ball

Tyler Barishaw

Sarah Beach

Thomas Beck

Amy Griffin

and Scott Behson

Ari & Clair Benmosche

Denise V. Benmosche

Dr. Garrett Bennett

Eloise Cole Bennett

Ganet Bennett

Ruth Berliner

Adele Bernstein

Lisa Bettke

Jean Bickley

Sandra Billings

Ethan Bindernagel

Michael Bittenbender

Kent Blocher

Lee Bloomberg

Lynda Shannon

Bluestein

Carter Bonecutter

Daniel Borhi

Steven Boushell

The Brands

Nancy A. Brown

Bart Brown

Lisa Brown

John Bulgarelli

Carol Burgess

Suzanne Burkhardt

Kimberly Burns

and Jim Ballard

Ella Cahill & Family

Deirdre Campbell

Max Canady

Martha Castillo

Julie Chelminski

Charles Chinzi

Philip Chua

Sharon Clark

John & Kylie Closson

John Cody

John Hamlin

& Greg Cole

Erika Collins

Karen Como

---

---

## CONTRIBUTORS BETWEEN 9/1/2020 AND 9/1/2021

*(Includes Members from past MainStage Seasons)*

Chris & Jim Corgel	Benjamin Frimmer	& Thomas Hickey	Ms. Alisyn Camerota
Rachel Cowen	Joanne Fuss	Pamela Hill	Jay Lewis
Steve Crawford	and Joanne Pica	& Michael Lorr	Kodee Lewis
Anthony Howard Crisci	Randye Kaye	Elizabeth Hilton	Zeyi Li
Michael &	Gladys Gallagher	Mary Hoermann	Andrea Light
Courtney Cronin	Elaine Ganat	Margaret Holton	Baudelio Lozano
Dolly Curtis	David Garlock	David Holzemer	Michael Luciano
Andrea Light	Susan Garthwaite	Rebecca Hoodwin	Kathryn Luckstone
& Jack Cutler	Wendy Gerbier	Terri Hoops	Janet & Jim Luongo
Robert Cygan	Christy Gibb	Linda Hudson	Shirlee Maddren
The Deitch	Grace Givan	and Randy Burnham	Phyllis & Ken Makovsky
& Urquhart Family	Mary Gladden	Paul R. Hunter	Mary Makowka
Carole Dell'Aquila	Joanna Gleason	Lynne Huxsaw	Robert Malchiodi
Stephen DeMaria	Matthew Glickman	Oleksandr Ierenkov	Cynthia Malchiodi
Susie Denardo	Jeanne Gnuse	Robert Jennings	Suraj Malhotra
Janet & Tim Densky	Emily S. Gordon	Susan Jimenez	Michele Markelon
Alice Deutsch	Brandon Gorz	Jon & Kim Jodka	David and Ann Matlow
Bernard Deverin	Peter Gould	Denise Johnson	Bonnie Maur
Eva Susanne Dewitz	Burton Grad	Justin Johnson	Barbara McAree
Rishabh Dhankani	and Carol Anne Ances	Dean Kauffman	Adam McAree
Al's Angels	Arlene Graffa	Betty Kaye	Catherine McAree
Molly Alger	Katherine Greco	The Keasler Family	James McAree
and Jay Dirnberger	Matt Greenberg	Mary Ellen Keenan	Paulette Oliva
Cheryl Dixon	Lindsay Arakelian Grega	Margaret Kelley	& Peter McClung
Diane Donovan	Amy Griffin	Kesselmark Family	Jim & Siobhan
Susan Dorn	Lawrence &	Alex Kessinger	McCormack
Shirin Dorne	Maryann Grimaldi	Mohammad	Glenn McGarvey
Nicolas Dromard	Tristan Guevara	Safiullah Khan	Sean and
Bob & Tracey Duff	Dan Guller	Mark Koczan	Brenda McGee
Cade Dugan	Vignesh Gunda	Gigi koleszar	Thomas McGee
Timothy Dugan	Jeff Gurner	Monica Kolinsky	John McGovern
Marcia and Bill Eckerd	Michelle Gurner	Sophia Konstantinou	Edgar McIntosh
Wendy Engel	Mary Ellen Guzewicz	Ganesh Koukuntla	Dr. E. Marie McPadden
Emily Epstein	Susan Haefner	Robert Koutras	John and Sharon Miller
Logan Epstein	Calem Hall	Katharine	Stacy Miller
Jerome H. Ewing	Amy Hamlin	& Rob Kreager	Doug & Elaine Mintz
Lisa Fairchild	Liz H.	Gerry Krom	Bridget Mitchell
and Kim Titus	Clay Hamlin	Glenn Lajeunesse	Katy Mitchell
Richard Ferguson	Sean Hannon	Boaz Lalo	Steve Mitchell
Michael Ferry	Aidan Harmon	Joe Landry	Arvind Mohan
Cherie A Flavin	Garrett Harper	Amy & Greg Lang	Alex Mongillo
Jackie Flournoy	Cole Harris	Paul LaValle	Marjorie Moss
Mary Foss-Skiftesvik	Mr. Gregory Hauck	Anthony Leigh	Jeffrey Moss
Wally Frey	Owen & Dorit Heimer	Bill Lent	Kiley Moss
Michele Fried	David B Heuvelman	Mark Lesnik	Cassandra Mullany
Donald Fries	Joe Shafranek	Mr. Timothy Lewis and	Ileana Muxo

---

---

## CONTRIBUTORS BETWEEN 9/1/2020 AND 9/1/2021

*(Includes Members from past MainStage Seasons)*

Bill Nabel	Pete and Lynne Penczer	Carolyn Savoia	Patricia Terry
Richard Nager	Joan Pendergast	John Schilling	Andrew Tkacz
Alane & Mark Nebbia	Valerie Perlman	James Schilling	Brendan Traverso
Debra Argen-Nesta	Phil Perry	Barbara Schilling-Burger	Ellen Turner
Edward F. Nesta	Ellen Petrino	Susan Schulz	Cynthia & Stan Twardy
Michael and Lynnette Neupauer	Randy & Sherri Peyser	Nancy Scicutella	Nancy Usic
Timothy Newton	William Pierz	Kesiah Scully	J. George Uzwiak
Kenneth Ng	Christine Place	Arda Sebuktekin	Diane Vanderkroef
Allen Nielson	Charlene Plautz	Charles Shaeffer	Brian Vasquez
Harry Nikel	Sharon Poole	Neil Shah	Kathleen Verron
Nancy A. Nishball	and Mike Bittenbender	Ruth Ann Shay-Johnson	Wendy Vickrey
George & Irene Nova	Jonah Porter	Ardersen Shen	Jerusha Vogel
Kevin O'Bryan	Becca Raiser	Riley Shorter	Anne & Gil Watkins
Kristen O'Connor	James Bindernagel	Vinayak Singh	Dolores Watkins
Brandon Olsberg	Rose Bindernagel	Dan Sklar	Kenneth Weakley
Dawn Ross Olson	Ashwin Ramesh	Doris Skutch	Michael Weber
Penny Palmer	Dr. Henry Rapp III	Kirsti & Jay Spadone	Lauren Weglian
Yash Pande	Lawrence Altman	Jackie Spera	The Weinberger Family
Jo Anne Parady	& Gregory Rayner	Trudy A. Spiller	Joan Weiss
Dev Parekh	Martin Resnick	Deborah Spinola	Marshall Weiss
Marisa Parrotta	The Rival Family	Brian Stack	David Westmoreland
Jack Parrotta	RJ Romeo	James Stakebake	Sharon White
Nick Parrotta	Bob & Judy Rosenkranz	Emily Stec	Donald Whittaker
Mary E Parrotta	Jeff Rosier	Cantor Laura Stein	Penny Wickey
Akash Patel	Mimi Roth	Marian Stern	Lara Wisch
Nolan Patel	Thomas Rouffiac	Marcus Stewart	Mark Y.
Shrey Patel	Becky Ruthven	Jack Stid	Russell Yuen
Yash Patel	Gina Ryan	Gail Stone	Clay Zambo
Sahvan Patel	Yanni Samoilis	John Stramaglia	Melissa Zambo
Erik Paul	Annette Sandt	Michele &	
Anjana Peddi	Nitish Sanil	Gregory B. Sweeney	
Max Pegg	Dr. Anthony Santomauro	Wade Swormstedt	
	Harold J Sauer	Sheila Taccone	

# An Invitation to Get in on the Act!

For over thirty-five years, Music Theatre of Connecticut has been bringing theatre to Fairfield County. Music Theatre of Connecticut is a 501(c)3 non-profit arts organization and is governed by a volunteer board of directors and, in addition, relies on a strong group of community volunteers who serve on a variety of production and fundraising committees. Please join us and become a part of the Music Theatre of Connecticut family.

**Become an MTC Member today!**  
Visit [www.musictheatreofct.com](http://www.musictheatreofct.com)





**"Don't dream it,  
be it..."**

**The Rocky Horror Picture  
Show**

**Wishing  
everyone at  
MTC a wonderful  
season!**

**Henry Rapp, III  
&  
Jonathan Sichel**



**CURTAIN  
CALL**

Kweskin Theatre  
Dressing Room Theatre

curtaincallinc.com

**MTC FANS SAVE 10% OFF TICKETS WITH CODE MTC**

*(Applies to new sales only; cannot be combined with other discounts.)*

**Curtain Call's 32nd Season - Sterling Farms Theatre Complex**

**CELEBRATING 50 YEARS IN THE KWESKIN THEATRE**



First time at Curtain Call



**GROUNDHOG  
DAY**  
THE MUSICAL

Based on the hit film!

AREA PREMIERE!



First time at Curtain Call



First time at Curtain Call

**SHE  
LOVES  
ME**



*Agatha Christie*

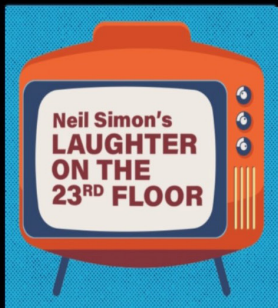
**A MURDER  
IS ANNOUNCED**

AREA PREMIERE!

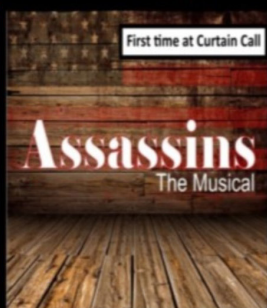


**The  
Wisdom  
of Eve**

Area Premiere!!!

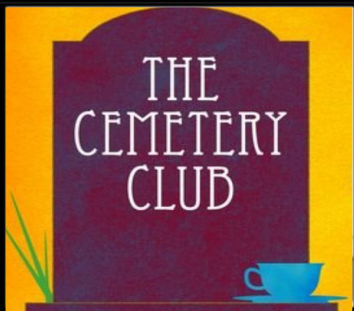


Neil Simon's  
**LAUGHTER  
ON THE  
23<sup>RD</sup> FLOOR**



First time at Curtain Call

**Assassins**  
The Musical



**THE  
CEMETERY  
CLUB**

Stamford's longest-running and only year-round, nonprofit producing theatre company.

**WINNER:**

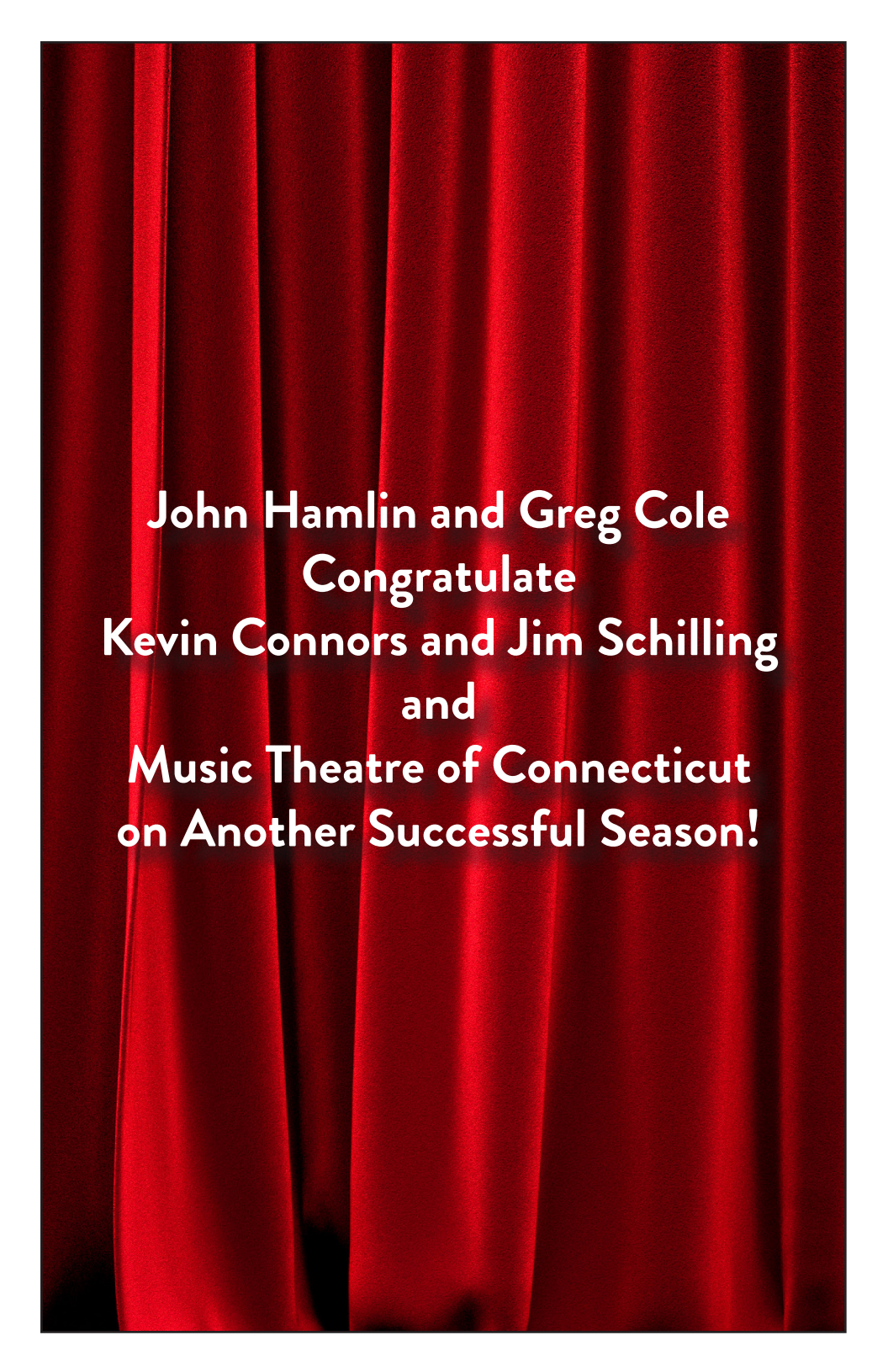
- BEST LOCAL THEATRE 10 YEARS IN A ROW
- GOVERNOR'S AWARD FOR EXCELLENCE
- ACE AWARD FOR EXCELLENCE IN ARTS & CULTURE

Produced in cooperation with The City of Stamford

Sponsored in part by the CT Office of the Arts / Department of Economic Development

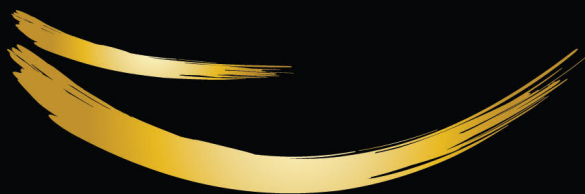
**203-461-6358 www.curtaincallinc.com 1349 Newfield Avenue, Stamford, CT**



A background of rich red, vertically pleated curtains, likely velvet or silk, with soft lighting creating subtle shadows and highlights in the folds.

**John Hamlin and Greg Cole  
Congratulate  
Kevin Connors and Jim Schilling  
and  
Music Theatre of Connecticut  
on Another Successful Season!**

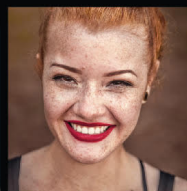
# SHOW OFF YOUR SMILE



ADVANCED DENTISTRY  
OF FAIRFIELD COUNTY

— ONE SMILE AT A TIME —

**Henry C. Rapp III, D.M.D.**  
General and Cosmetic Dentistry



[AdvancedDentistryFairfield.com](http://AdvancedDentistryFairfield.com)

161 Sherman Street • Fairfield • CT • 06824

203•259•5026

**Birinyi Associates is pleased to support  
Music Theatre of Connecticut**

**B I R I N Y I**  
A S S O C I A T E S I N C.

Please visit us at [Birinyi.com](http://Birinyi.com)  
Westport, CT