

MUSIC THEATRE OF CONNECTICUT

MTC MAINSTAGE



GHOST

THE MUSICAL



Ameriprise
Financial



Advice worth
talking about.™

Customized advice *that changes with your needs.*

Everyone has different financial goals and priorities, and they change and grow as you do. That's why it's important for us to get to know you and understand what you're working toward. Together, we can create a personalized financial plan that fits your needs today and helps you build the tomorrow you deserve.



Bunting & Somma

A private wealth advisory practice of Ameriprise Financial Services, LLC

203.222.4994, option 1

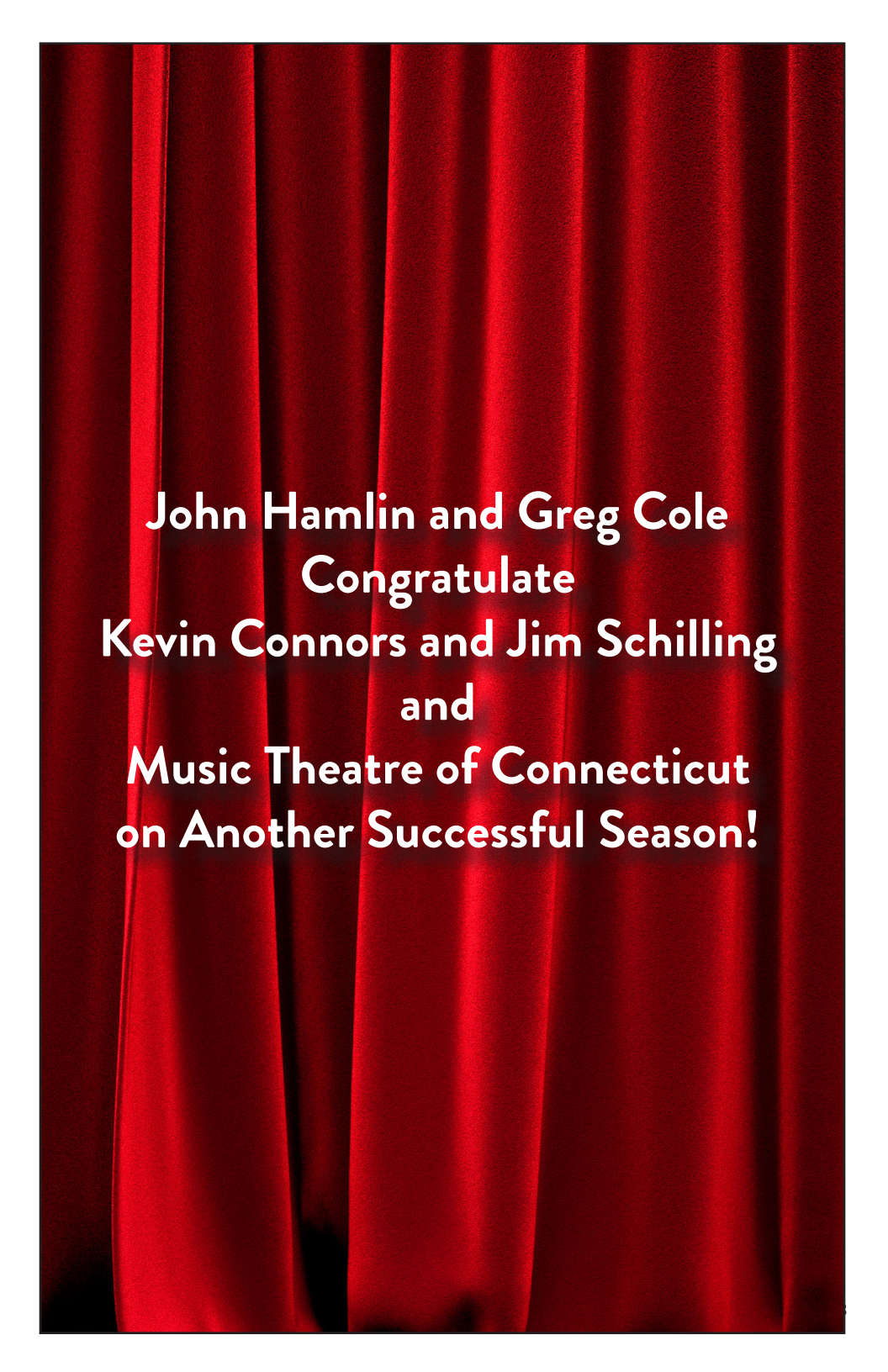
2425 Post Rd, Southport, CT 06890
www.buntingandsomma.com

Not FDIC or NCUA Insured | No Financial Institution Guarantee | May Lose Value

Investment advisory products and services are made available through Ameriprise Financial Services, LLC, a registered investment adviser.

Ameriprise Financial Services, LLC. Member FINRA and SIPC.

© 2022 Ameriprise Financial, Inc. All rights reserved.

A background of deep red velvet curtains with vertical folds and a slight sheen.

**John Hamlin and Greg Cole
Congratulate
Kevin Connors and Jim Schilling
and
Music Theatre of Connecticut
on Another Successful Season!**



SIGNATURE

CONSTRUCTION GROUP, INC.



NORWALK CONNECTICUT
277 Rowayton Avenue, Norwalk, CT 06853
Tel: 203-325-0628
www.signatureconstruction.com





COASTAL BRIDGE
ADVISORS

Family. Wealth. Lifestyle. Retirement.
Uncomplicate It.

Coastal Bridge Advisors
is a proud supporter of the
Music Theatre of Connecticut.

We salute their mission to provide
musical theatre performance and
training to our community.

coastalbridgeadvisors.com

54 Wilton Road, Westport, CT 06880
2121 Avenue of the Stars, Suite 2300, Los Angeles, CA 90067
203.683.1530 • 800.700.5524

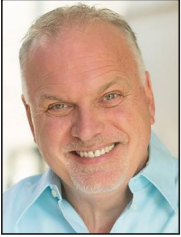
Coastal Bridge Advisors is an Investment Advisor registered with the SEC.



Congratulations
to Kevin Connors
and Jim Schilling.

You have impacted
the lives of so many
and culturally enriched
even more!

MUSIC THEATRE OF CONNECTICUT
MTC MAINSTAGE



Welcome to *Ghost: The Musical!*

We are so excited to wrap up our 37th season with this amazing musical adaptation of the Oscar-Winning film of the same name. Bringing *Ghost* to the MTC stage has been a long time coming, as the show was originally slated to open in September 2020, but certainly there were other challenges happening then. So, like *Buddy: The Buddy Holly Story*, this closes the circle on “productions in waiting” and this one is definitely worth the wait.

The cornerstone of MTC’s theatrical aesthetic is “to experience theatre not just observe it”; meaning I, and our entire creative team, are storytellers. Theatre makers. We want you, the audience, to feel a part of the production, learn to know the characters, feel much of what they are feeling, and take the journey with them.

While this is a musical adaptation, *Ghost: The Musical* is written in a very cinematic style (not surprising with a book by Oscar-winning screenwriter for the film, Bruce Joel Rubin), with the storytelling by-and-large uninterrupted. *Ghost* is a story about love, greed, loss and grief, with an overarching influence by some higher power; a real life demonstration that we are sometimes guided by an unknown and unseen energy here to protect, assist, and guide us to a peaceful resolution to an issue or crisis. And that love can be the most powerful and underrated force. While we may not face the specific challenge that Molly is facing in *Ghost*, most of us have likely had some experience in our lives that seemingly defied explanation, but ultimately led to a peaceful resolution none the less. A situation which, for whatever unexplained reason, allowed us to move on.

Lastly, the musical score of *Ghost* penned by Eurhythmics member Dave Stewart and multiple Grammy-winner Glen Ballard Jr., is rich, lush and reflects its source material with a very film score sound and feel.

Nominated for three Tony Awards, five Olivier Awards, multiple Drama Desk and Outer Critics’ Circle awards, *Ghost* has become a powerful part of the contemporary musical theatre canon and we are proud to present this moving tale in our signature up-close-and-personal way.

Thanks as always to our stellar team of designers, technicians, support staff; senior staff Jim Schilling, RJ Romeo and Alex Mongillo, our brilliant cast and musicians, choreographer Clint Hromsco, musical director Tony Bellomy and the entire MTC team for joining me in bringing this powerful story to life.

Thanks as well to you, the audience, for your continued support of all our work here at MTC, and enjoy the show.

A stylized, handwritten signature in black ink, appearing to read 'K Connors'. The signature is fluid and cursive, with a long horizontal stroke extending to the right.

KEVIN CONNORS

Director of *Ghost: The Musical*

MTC Executive Artistic Director & Co-Founder

Put Your Health In Focus

Connecticut's home for LGBTQI+
affirming healthcare and sexual health.

- Primary Medical Care
- STI Testing and Treatment
- HIV Prevention (PrEP & PEP)
- HIV Treatment and Care
- Vaccinations
- LGBTQI+ Affirming Care
- Hormone Replacement Therapy
- HEP C Treatment
- Onsite Pharmacy (340B)
- All CT Insurances Accepted!

Request an appointment at
www.circlecarecenter.org

618 West Avenue
Norwalk, CT 06850
203-852-9525

300 Hebron Ave. Suite 113
Glastonbury, CT 06033
860-657-0764

circle
care center

April 12-28, 2024

MUSIC THEATRE OF CONNECTICUT
MTC MAINSTAGE

presents

GHOST THE MUSICAL

Book & Lyrics by BRUCE JOEL RUBIN
Music & Lyrics by DAVE STEWART & GLEN BALLARD

Based on the Paramount Pictures film written by BRUCE JOEL RUBIN

with

PAUL AGUIRRE* KAYLA ARIAS LADONNA BURNS*
SETH ELISER* TEAGAN LA'SHAY*
MATT MANCUSO* SCOTT MIKITA* JEFF RAAB*
LEEANNA RUBIN ALLIE SEIBOLD*

Costume Design by DIANE VANDERKROEF
Scenic & Props Design by APRIL M. BARTLETT
Lighting Design by RJ ROMEO Sound Design by JON DAMAST
Fight & Intimacy Choreography by DAN O'DRISCOLL
Choreography by CLINT HROMSCO
Musical Direction by TONY BELLOMY
Stage Managed by ABBEY MURRAY*
Directed by KEVIN CONNORS

* Members of Actors' Equity Association, the union of professional actors and stage managers in the United States.

GHOST: THE MUSICAL is presented through special arrangement with Theatrical Rights Worldwide.
www.theatricalrights.com

Original West End Production Produced by Colin Ingram, David Garfinkle, Adam Silberman,
Land Line Productions, Donovan Mannato, Michael Edwards / Carole Winter

This version of GHOST: THE MUSICAL was further developed and produced by
the Fulton Theatre, Lancaster, PA: Marc Robin, Artistic Director and Aaron A. Young, Managing Director, in association with Maine State Music Theatre.

"Unchained Melody" written by Hy Zaret and Alex North, courtesy of Unchained Melody Publishing LLC
Orchestrations by David Abbinanti

MTC is generously sponsored in part by

circle
care center

 **CONNECTICUT**
The State of Connecticut
Department of Economic and Community Development

KAPLAN GIRLS MUSIC FUND
THE BURRY FREDRIK FOUNDATION
THE SCHNURMACHER FOUNDATION



Treat your home like a work of Fine Art

Welcome to the Interstate Design Centers,
where the very best in windows, doors &
hardware are on display in Greenwich &
Westport, CT and Shrub Oak, NY.

The view outside your window is like a
painting, so give it the frame it deserves with
windows and doors by Marvin.

At the Interstate Design Center, we believe
that your home is more than just a house,
it's a work of art. So explore new designs
and styles from Marvin, and turn your
home into a masterpiece.

IDC Greenwich
184 S. Water St
Greenwich, CT
(203) 531-8050

IDC Westport
800 Post Rd E.
Westport, CT
(203) 221-1620

IDC Shrub Oak
1248 E Main St
Shrub Oak, NY
(914) 245-5050

MARVIN 

Available At

IDC

Interstate Design Center



THE "GHOST: THE MUSICAL" COMPANY



PAUL
AGUIRRE



KAYLA
ARIAS



LADONNA
BURNS



SETH
ELISER



TEAGAN
LA'SHAY



MATT
MANCUSO



SCOTT
MIKITA



JEFF
RAAB



LEEANNA
RUBIN



ALLIE
SEIBOLD



250 Westport Ave
Norwalk, CT 06851



PARK AVENUE CAPITAL

TRANSPARENCY. PARTNERSHIP. ALIGNMENT.

GREG BAEKEY, BEN FELDMAN, PETER TIBORIS, MATTHEW WUNDER AND THE TEAM AT PARK AVENUE CAPITAL ARE PROUD TO SUPPORT MUSIC THEATRE OF CONNECTICUT FOR THE PAST 10 YEARS!

Most financial companies want you to invest in them. We'd rather invest in you.

Park Avenue Capital

274 Riverside Avenue, Ste. 4

Westport, CT 06880

pac.nm.com

071016 © 2023 Northwestern Mutual is the marketing name for The Northwestern Mutual Life Insurance Company (NM) (life and disability insurance, annuities, and life insurance with long-term care benefits) and its subsidiaries. Subsidiaries include: Northwestern Mutual Investment Services, LLC (NIMS) (investment brokerage services), a registered investment adviser, broker-dealer, and member of FINRA and SIPC; Northwestern Mutual Wealth Management Company (NWMWC) (investment advisory and trust services), a federal savings bank. Not all Northwestern Mutual representatives are advisors. Only those representatives with "advisor" in their title or who otherwise disclose their status as an advisor of NWMWC are credited as NWMWC representatives to provide investment advisory services. NM and its subsidiaries are in Milwaukee, WI. Members of Wunder Financial Use Wunder Financial as a marketing name for doing business as representatives of NM. Wunder Financial is not a registered investment adviser, broker-dealer, insurance agency or federal savings bank. To view detailed disclosures regarding individual representatives, view their information at <http://pac.nm.com>.

CAST

(alphabetically by actor)

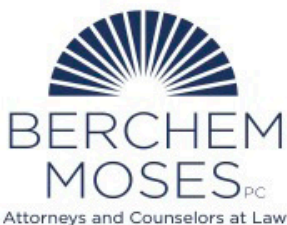
PAUL AGUIRRE	<i>Willie Lopez</i>
KAYLA ARIAS	<i>Louise/Wallace/Ensemble</i>
LADONNA BURNS	<i>Oda Mae</i>
SETH ELISER	<i>Sam</i>
TEAGAN LA'SHAY	<i>Clara/Ortisha/First Nun/Ensemble</i>
MATT MANCUSO	<i>Carl</i>
SCOTT MIKITA	<i>Subway Ghost/Orlando/Ensemble</i>
JEFF RAAB	<i>Hospital Ghost/Lionel/Ensemble</i>
LEEANNA RUBIN	<i>Mrs. Santiago/Bank Officer/Second Nun/Ensemble</i>
ALLIE SEIBOLD	<i>Molly</i>

PLACE/TIME:

New York City, modern day.

GHOST: THE MUSICAL will be performed with a 15-minute intermission

The videotaping, photography, or making of electronic or other audio and/or visual recordings of this production is a violation of United States copyright laws and an actionable federal offense.



Supporting the Arts in Our Communities

We believe that arts and culture create a vibrant landscape, enhancing the quality of life in Connecticut's towns and cities. Our firm has been serving the community for over 80 years. Now with more than 30 attorneys, our staff is actively involved in numerous local, civic and charitable initiatives statewide.

- Corporate/Business Law
- Land Use & Zoning
- Litigation
- Real Estate
- Labor & Employment
- Estate Planning/Probate
- Education Law
- Divorce & Family Law

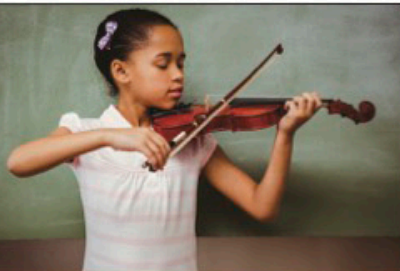
www.berchemmoses.com

Milford

75 Broad Street, Milford, CT 06460
Phone: 203-783-1200

Westport

1221 Post Road East, Westport, CT 06880
Phone: 203-227-9545



ROBERT SCIGLIMPAGLIA
ATTORNEY AT LAW

101 Merritt 7 Corporate Park
Suite 300
Norwalk, Connecticut 06851
Phone: (203) 663-2803
Fax: (203) 505-6249
robscig@usa.net
TAX ID #: 06-1438026

Certified Worker's Compensation Specialist

*Stamford Office:
Soundview Plaza
1266 E. Main Street
Suite 700R
Stamford, CT 06902
Phone: (203) 989-9171*

*New York Mailing Address:
1177 Avenue of the Americas
Fifth Floor
New York, NY 10036
Phone: (646) 688-4361
Fax: (646) 365-3364*

Admitted in Connecticut and New York
Practicing since 1991

Certified Worker's Compensation Specialist
Personal Injury Law
Real Estate/Foreclosure
Entertainment/Trademark/Copyright Law

*Named #1 Real Estate Attorney in Norwalk by
legaldirectorate.com*

Named SUPERLAWYER™ from 2009-2022

*Named TOP 100 Trial Lawyer by
National Trial Lawyers Association*

10.0 Superb Rating on AVVO

Author of Amazon Best Selling Book:
"Voice Over Legal"

WHO'S WHO

PAUL AGUIRRE (*Willie Lopez*) is excited to be back at MTC after last being seen in Sunset Boulevard. Other favorite CT credits include *In the Heights* (Westport Country Playhouse), *Evita* (ACT), *Jesus Christ Superstar* (7 Angels), *The Music Man* (STONC) and *Guys & Dolls, Singin' in the Rain* and *Bye Bye Birdie* (Godspeed). Paul is also the creator/owner of BroadwayDollsandGuys.com. Love to David, Nikki and Arya. Paul forever dedicates his work to Ma for her never-ending love and support.

KAYLA ARIAS (*Louise/Wallace/Ensemble*) is thrilled to be making her MTC debut! Past credits include Clara Track in *Ghost* and Pearl Krabs in *The Spongebob Musical* at Arizona Broadway Theatre. She hopes the show resonates with all of you, as love and loss are such painful, yet beautiful experiences.

LADONNA BURNS (*Oda Mae*) is a NYC based artist, is thrilled to make her MTC debut in this dream role! NY: *White Girl in Danger* (Nell Standby), *Caroline, or Change* (Caroline), *Follies* (Stella). National Tours: *Rent* ("Seasons of Love" Soloist) and *Seussical* (Sour Kangaroo). Recent regional credits: *Cinderella* (Fairy Godmother), *Sister Act* (Sister Mary Lazarus), *Mary Poppins* (Mrs. Corry), *All Shook Up* (Sylvia). Thanks to my family and my honey!

SETH ELISER (*Sam*) is excited to share this special show and perform with his wife, Allie Seibold! Recent Credits: World Premiere of *Punk Rock Girl*, PCLO's *Godspell*, *The Twelfth Night Show* (Grange Theater), *Beauty and the Beast* (Tour: Orchestra of Japan). Nat'l Tours: *Music Man*, *Lightning Thief*, internationally with DCL. Drummer and guitarist for Broadway writers Joe Iconis and Rob Rokicki. Thank you to his Louisiana/New Jersey family for their love and support, and Kevin and Jim for this opportunity! www.setheliser.com

TEAGAN LA'SHAY (*Clara/Ortisha/First Nun/Ensemble*) is excited to be back for MTC's GHOST. She recently made her MTC debut as Jo in *The Legend of Georgia McBride*. Previous credits include *Bat Boy* (Reverend Hightower), *Little Miss Perfect* (Reatha), and *Next to Normal* (Natalie). WCSU BFA Musical Theatre. Many thanks to her supporters! @teaganlashay

MATT MANCUSO (*Carl*) is excited to be back at MTC! Recent credits include; *Clybourne Park* (Jim/Tom), *Jersey Boys* (Bob Crewe), *The Importance of Being Earnest* (VSF), *You're Gonna Love Tomorrow* (Theater 2020), *The Winter's Tale* (VSF), *Dessa Rose* (Chromolume). Thank you to Kevin and Jim and all my friends and family! www.mancusomatt.com

SCOTT MIKITA (*Subway Ghost/Orlando/Ensemble*) Delighted to be back MTC (first show: Eddie in *The Legend of Georgia McBride*) Broadway: *Phantom of the Opera* (20+ years); Tours: Hal Prince's *Show Boat*, *Into the Woods*, *Martin Guerre*. Regional: *She Loves Me*, *Company*, *Midsummer Night's Dream* (Steppenwolf), *Lend Me a Tenor*, *Crazy for You*, *Fabulous Lipitones*, *Wallenberg*; Northwestern University graduate. Love to Hannah and Lily.

JEFF RAAB (*Hospital Ghost/Lionel/Ensemble*) MTC: *Rocky Horror Show* (Riff Raff), *Jersey Boys* (Joe Pesci). Regional favorites: *Richard III* (Richard) *The Tempest* (Trinculo), *Man of La Mancha* (Sancho), *Into the Woods* (Baker), *The Robber Bridegroom* (Goat), *Woody Guthrie's American Song*, two seasons with Texas Shakespeare Festival. SCSU Adjunct Faculty. Delighted to be back! www.jeffreymichaelraab.com



GREEK & ITALIAN CUISINE

www.jordansrestaurants.com

FREE DELIVERY & TAKE OUT
252 Flax Hill Road,
Norwalk, CT 06854
(203) 852-0003

DINE IN & TAKE OUT
369 Westport Avenue,
Norwalk, CT 06851
(203) 846-9557

“All the world’s a stage...”

William Shakespeare, As You Like It

And you’ve
done it brilliantly!

Wishing everyone at
Music Theatre
of Connecticut
a wonderful season!

The McAree Family



of Darien



(855) 552-1292
1335 POST ROAD • DARIEN, CT 06820

WHO'S WHO

LEEANNA RUBIN (*Mrs. Santiago/Bank Officer/Second Nun/Ensemble*) MTC debut! National Tour: *Annie. Gypsy* (The Marriott Lincolnshire), *Something Rotten* (Sharon Playhouse), *Man of La Mancha* (The Fulton), *Harvey* and *Good People* (Milwaukee Repertory). New York: *A Class Act* (J2 Spotlight), *Man of La Mancha* (Plaza Theatrical), *Assassins* (The Secret Theater). Representation: Gray Talent Group. @LeeannaRubin

ALLIE SEIBOLD (*Molly*) is thrilled to be back at MTC! Previously Betsy/Lindsey (*Clybourne Park*). To play her dream role alongside her husband is a gift! Nat'l & Internat'l Tours: *The Lightning Thief*, *Disney on Classic*, *Footloose*. Favorite Credits: *Beautiful: The Carole King Musical* (North Shore MT), *Sunday in the Park with George* (Axelrod Arts Center). Thank you Kevin, Jim, MTC, her life & stage partner, Seth, Avalon Artists Group, family and friends for endless support. BFA MT Boston Conservatory. www.allieseibold.com

KEVIN CONNORS (*Director, Executive Artistic Director & Co-Founder*) Numerous Off-Broadway productions including *Play Like a Winner* (NYMF award-winner), *Prime Time Prophet*, and *Jukebox Saturday Night*. Regional productions include *The Fantasticks*, *It's a Wonderful Life: A Live Radio Play*, and *A Christmas Carol*; with such stars as Joan Rivers, James Naughton, and Joanna Gleason. Directed over 150 MTC Equity MainStage productions including *Next to Normal*, *Lady Day...*, *Falsettoland*, *Ragtime*, *Cabaret*, *Little Shop of Horrors*, *Master Class*, *Gypsy* (all Connecticut Critics' Circle Award Noms/Winners), and *It's a Wonderful Life: A Live Radio Play*, (Moss Hart Award Winner). BroadwayWorld Award Best Director for *Cat on a Hot Tin Roof*. Multiple Connecticut Critics' Circle

Best Director winner including *Ragtime* and *Falsettoland*, two-time recipient of the Tom Killen Award for Outstanding Contribution to Connecticut Professional Theatre. Composer of numerous musicals including *It's a Wonderful Life: A Live Radio Play*, *A Christmas Carol: A Live Radio Play* and *The Great Gatsby: A Live Radio Play* (all published by Playscripts, Inc.). Adjunct professor: The Hartt School of Music/University of Hartford, Sacred Heart University, the University of Bridgeport. www.kevin-connors.com

JIM SCHILLING (*Managing Director, Co-Founder*) co-founded Music Theatre of CT in 1987 and is currently MTC's Managing Director and Director of the School of Performing Arts. MTC acting credits include *Jacques Brel is Alive and Well...*, *Three Guys Naked from the Waist Down*, *Yours, Anne*, *It's a Wonderful Life: A Live Radio Play*, *Doubt*, *Almost, Maine*, *God of Carnage*, *The Fantasticks*, *Vanya and Sonia and Masha and Spike*, *The 39 Steps*, *Cat on a Hot Tin Roof* and most recently, *Sylvia*. He was nominated for a CT Critics Circle award for Herr Shultz in *Cabaret* and winner of the BroadwayWorld award for *Cat on a Hot Tin Roof*. He continues as a Blue Ribbon Panelist for the Daytime Emmy Awards, and is on the voting committee for the SAG awards, and a member of "Who's Who in the American Theatre" from 1991-present. Jim was also an adjunct professor at Sacred Heart University (Advanced Acting, Advanced Scene Study, Script Analysis and Directing) where he was recently nominated Best Director of a musical for his work on *Godspell*.

APRIL M. BARTLETT (*Scenic & Prop Design*) is an Emmy award winning versatile visual artist specializing in storytelling and is inspired by the limitless potential of an undefined space. She is a production designer, scenic designer, educator, coordinator, artist and maker. April is the Program Head of the Production



AES is excited & proud
to be a sponsor of MTC!

WHO'S WHO

and Design Program at Sands College of Performing Arts at Pace University. Prior to teaching, April was the Art Director for NBC Universal's *The Today Show*. Select screen credits: *The Today Show* (NBC), *OneIronaut* (The Outer Loop Theater Company-international), *The Tonight Show* starring Jimmy Fallon (NBC), *Christmas in Rockefeller Center* Gwen Stefani (Peacock, NBC) and *The Late Show* with Stephen Colbert (CBS). Select theater credits: *Brilliant, A New Musical* (Dani B Productions), *A Pound In Your Pocket* (Charles Strouse NY Premiere); *Wrap Your Heart Around It* (Best Production NYC Solo Festival); *The Adventures of Boy and Girl* (NYC Fringe); *Sousepaw, Font of Knowledge* (Shelby Company); *The Most Damaging Wound* (The Production Company). Proud member of USA829. BFA, Emerson College / MFA, Carnegie Mellon. www.AprilBartlettDesign.com

CLINT HROMSCO (*Choreographer*) is thrilled to return to MTC in this capacity after playing the role of Casey in *The Legend of Georgia McBride*. He has performed in 5 national tours, at countless regional theatres and in several NYC productions. He has also been featured in several NYC, regional and international commercials, print ads and TV shows. His work can be seen in *Before I Go*, starring Annabella Sciorra, currently streaming on Amazon Prime and in the film *Resilient*, for which he won Best Supporting Actor at the NY International Film Festival and the Vegas Movie Awards. Clint won the 2022 BroadwayWorld Chicago Award for Best Direction of a Musical for his work on *La Cage Aux Folles*. His production of *Frankenstein the Musical* ran for 3 years Off-Broadway and was selected to perform at the 2019 Broadway in Bryant Park series. BFA in Acting, Dance minor from Ithaca College. [@chromsco](http://www.clinthromsco.com)

ABBEY MURRAY (*Production Stage Manager*) is so excited to be stage managing her second season at MTC! She is a graduate of Western

Connecticut State University with a degree in Stage Management and Design Technology. She would like to thank her loved ones for their endless support! Enjoy the show!

DAN O'DRISCOLL (*Fight & Intimacy Director*) On Broadway: Associate Fight Director for *American Buffalo*, *Hangmen* and *Pass Over*. Off-Broadway: Associate Fight Director on *Downstate* for Playwrights Horizons and *Des Moines* for Theatre For a New Audience. For MTC: *The Legend of Georgia McBride*, *Clybourne Park*, *Jersey Boys*, *Rocky Horror Show*, *I Hate Hamlet* (also played Barrymore), *Lend Me A Tenor*, *Sunset Boulevard*, *Sylvia*, *Ragtime*, *Cabaret*, *Jekyll & Hyde*, *End of the Rainbow* and *Sleuth*.

RJ ROMEO (*Director of Production / Lighting Designer*) returns to MTC for his fourth season as DP and fifth season as resident lighting designer. He was a CT Critics' Circle nominee for Best Projection Design for MTC's *The Mountaintop*, and other past MTC credits include *Cabaret*, *Ragtime*, *Steel Magnolias*, *Fully Committed*, *RFK*, *Becoming Dr. Ruth*, *Tru*, *Tenderly*, *Buddy*, and *Falsettoland*. In addition, RJ has designed lighting for countless regional productions such as *Guys and Dolls*, *Twelfth Night*, and most recently *Frozen Jr*.

DIANE VANDERKROEF (*Costume Design*) has been the resident costume designer for MTC MainStage and MTC School of Performing Arts since 2006. In the past she also worked with Kevin Connors on *Babes in Toyland* at the Stamford Center for the Arts. She did designs for the Connecticut Grand Opera, including *Elixir of Love*, *Don Giovanni* and *Don Pasquale*. She has also been designer for Downtown Cabaret Theatre's MainStage and Children's Company, as well as various musicals for New England Lyrical Operetta. When not designing, Diane is a flight attendant for Delta Airlines.



Your Inspiration. Our Expertise.

Lumber | Building Materials | Moulding
Windows & Doors | Architectural Hardware
Kitchens | Decking & Fencing | Paint & Design



Full Service Locations

Bethel
Branford
Darien
Lewisboro
Madison
New Milford
Niantic
Wilton

Paint Centers

Danbury
Fairfield
New London
Newtown
North Stamford
Norwalk
Orange
Stamford
Stratford
Trumbull
Westport
Wethersfield

RingsEnd.com | 800-390-1000



WHO'S WHO

MUSIC THEATRE OF CONNECTICUT

Executive Artistic Director	KEVIN CONNORS
Managing Director	JIM SCHILLING
Director of Production	RJ ROMEO
Box Office Manager & Administrative Manager	ALEX MONGILLO
Marketing & PR Consultant	JOE LANDRY
Cabaret Liaison	RAISSA KATONA BENNETT
Resident Costume Designer	DIANE VANDERKROEF
Resident Lighting Designer	RJ ROMEO
Assistant Stage Manager	JIM SCHILLING
Front of House Staff	STACY MILLER & NANCY SCIGLIMPAGLIA
MTC School Faculty	SHANNON COLFER, KEVIN CONNORS, ELISSA DEMARIA, ALEXANDRA FORTIN, LUCKENIA GUERRIERA, DEBORAH LEVY, TRACEY MARBLE, RACHEL MACISAAC, ALEX MONGILLO, CHRISTOPHER MYERS, JIM SCHILLING
Board of Directors	DAN ARON, GREG COLE, KEVIN CONNORS, MARK CORPRON, WENDY GERBIER, DAN GULLER, JOHN HAMLIN, JIM SCHILLING, GREG SWEENEY

FOR *GHOST: THE MUSICAL*

Production Assistant	CARA KRAMER
----------------------------	-------------

SPECIAL THANKS

Dan & Maureen Aron, John Hamlin & Greg Cole,
Lou Ursone & Curtain Call, Westport Country Playhouse,
Senator Richard Blumenthal, Congressman Jim Himes, Mayor Harry Rilling, Senator Bob Duff

ACTOR'S EQUITY ASSOCIATION (AEA) was founded in 1913, AEA represents more than 50,000 actors and stage managers in the United States. Equity seeks to advance, promote and foster the art of live theatre as an essential component of our society. Equity negotiates wages and working conditions, providing a wide range of benefits, including health and pension plans. AEA is a member of the AFL-CIO, and is affiliated with FIA, an international organization of performing arts unions. The Equity emblem is our mark of excellence. www.actorsequity.org



saversTM
SHOP. REUSE. REIMAGINE.

99 Federal Road in Brookfield, CT
(203) 775-5910 stores.savers.com/ct/brookfield

Gold's DELICATESSEN

421 Post Road East, Westport
(203) 227-0101

Dine In • Take Out • Custom Catering



9 Burr Road
Westport, CT 06880
203.222.4190
www.saugatuckcommercial.com
Proud members of ICSC, NEFA, REFA, WBENC



FULL-SERVICE COMMERCIAL REAL ESTATE BROKERAGE

SCRE IS PLEASED TO CONTINUE ITS SUPPORT OF MTC



**Here's to Another Terrific Season of
Top-Notch Performances!**

We can't do it without you!

Music Theatre of Connecticut gratefully acknowledges the support of the following individuals, foundations and corporations.

FOUNDATION SUPPORT

The Adolph and Ruth Schnurmacher Foundation

The Amalia and Nicola Giuliani Fund

The Burry Fredrik Foundation

The Dunagan Foundation, Inc.

Fairfield County Community Foundation

The GE Foundation

General Atlantic Philanthropic Foundation

Kaplan Girls Music Fund

Renaissance Charitable Foundation Inc.

The Robert W. Baird Foundation

TD Bank Charitable Foundation

CORPORATE SUPPORT

BTIG

Connecticut Department of Economic and Community Development

Circle Care Center

Eversource Energy

Hearst Connecticut Media Group

The Hour

The IBM Corporation

Levin Capital Strategies

Marsh McLennan

Melissa & Doug

Mizuho Investments

People's United Bank

RBC

Shoff-Darby Insurance

The Westport Inn

MTC MainStage Season is generously sponsored in part by

circle
care center

 **CONNECTICUT**
The State of Connecticut
Department of Economic and Community Development

KAPLAN GIRLS MUSIC FUND
THE BURRY FREDRIK FOUNDATION
THE SCHNURMACHER FOUNDATION

Follow us on social media for all things MTC:
behind-the-scenes photos, cast interviews,
exclusive offers, ticket giveaways and more!



facebook.com/MusicTheatreCT



instagram.com/musictheatrect



youtube.com/@5678MTC



The Norwalk Inn & Conference Center

Gatherings • Accommodations • Events

The rest is history.™



Phone: (203) 838-2000 • (800) 303-0808

99 East Avenue • Norwalk, CT 06951

www.norwalkinn.com



www.themcmcoffee.com

@themcmcoffee

2023/2024 MAINSTAGE SEASON MEMBERS

as of 4/4/24

HERO

(\$10,000+)

Dan & Maureen Aron
Tim Lewis & Alisyn Camerota
John Hamlin & Greg Cole
Jerusha & Ken Vogel

EXECUTIVE PRODUCER

(\$2,500 to \$4,999)

Bill Pierz
Marty Resnick
Stan & Cynthia Twardy

PRODUCER

(\$1,000 - \$2,499)

Jon & Kim Jodka
Lucinda Knuth
Paul R. Hunter &
Robert C. Larsen
Pete & Lynne Penczer
A Friend of MTC

DIRECTOR

(\$500 to \$999)

Sandra Benee
Madeleine, Carl, Kaiya, & Lillian
Corliss
Sarah Dahlgren
Donna Farber
Amy Griffin
Dan Guller & Eric James
MAF Architects
Sheila Martenson
Mimi Roth
Peter & Jackie Spera
Gary Cosgrave and Dina Upton
Kathleen Walsh
Mike Mushak & David
Westmoreland

DESIGNER

(\$250 to \$499)

Judith Anderson
Dr. Garrett Bennett
Nancy A. Brown
Jim & Susan Carter
Karen Como
Mark Corpron
Janet & Tim Densky
Eva Dewitz
Molly Alger and Jay Dirnberger
Mark Schiff & Carolyn Fahey
Karen Gasper
Heather Dennis & Kevin

Gillespie
Mary Gladden
Jeanne Gruse
Katherine Greco
Margaret Kelley and Peter Hyman
Juanita James
Betty Kaye
Mary & Chris Kinney
Shirlee Maddren
George & Irene Nova
Mark Overley
Penny Palmer
Joan Pendergast
Chris Place
Anne Pollack
Edward A. Pulice MD
Lawrence Altman &
Gregory Rayner
Susan & Edward Reilly
Deborah Spinola
Jeruha & Ken Vogel
Nancy Usic & Elizabeth
Wernqvist

ACTOR

(\$100 to \$249)

Durelle Alexander
Anne Banks
Dolores & Surinder Banta
David E. Bauer
Adele Bernstein
Christine Bisceglie
Stephen Bistran
Sharon Poole and Michael
Bittenbender
Kimberly & Paul Bryant-Smith
Linda Hudson and Randy
Burnham
Susan M. Byron
Sharon Clark
Ellen Davis
Rusty Drake
Sue Ehrens
Vance Fazzino
Diane Flagello
Sally Fliess
Bob Fox & Lois Fox
Dorothy & Jon Fox
Lisa Friedland
Donna Fullin
Joanne Fuss
Elaine Ganat
Susan Garthwaite
Katherine Golomb

Arlene Graffa
Maxine & Donald Greenberg
Joannie Greene
George & Nancy Hanze
Norene Hartog
Karen Heberlein
Samantha Lee Heilweil
Valerie Held
Carole & Warren Heller
Judith Hochstadt
Karen Isaacs
Joanne Koleszar
Susan MacPherson
Mary Makowka
Eileen Mancuso
Claire Mann
Robdmar Martin & Virginia
Martin
Dave Matlow
Roslynn Mccarthy
Susan Joy Miller
Mary Beth Mollica
Ken & Susie Ng
Karin Nicolet
Linda O'Shaughnessy
Mary Oster
Jo Anne Parady
Bruce R. Peabody
Lisa & Steve Petrovich
Meredith Poster
Stephanie Rival
Richard Roll
Meryl & Louis Rosenfeld
Ann & Don Rully
Francisco & Lucila Sabin
John N. Schilling
Kesiah Scully
Diane & Steven Shaby
Carol & Jim Shanbrom
Shelly and Len Sherman
Kirsti & Jay Spadone
Babs Staniszewski
Alice E. Stokes
Barbara Dobson & Robert Toth
Joan and Marshall Weiss
Rich & Karen Wellen
Arlene & Marty Yolles
Bruce & Nancy Zepke
3 Friends of MTC

banners pocketfolders
event signage copies menus magnets
business cards raffle tickets
manuals invitations flyers notepads
postcards eddm labels printing
direct mail calendars letterheads
envelopes brochures
posters wedding calendars post-it pads
stickers promotional products



A Norwalk institution that's been getting it right for over 30 years!

TRADITIONAL & DIGITAL PRINTING
FULL SERVICE COPY CENTER
LARGE FORMAT PRINTING

167 Main Street, Norwalk, CT 06851

T: 203.838.2795 | E: Norwalk@MinutemanPress.com

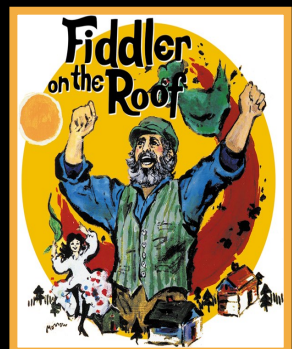
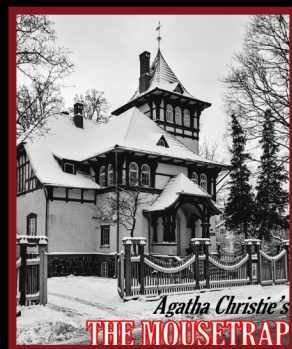
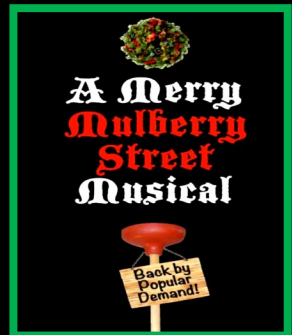
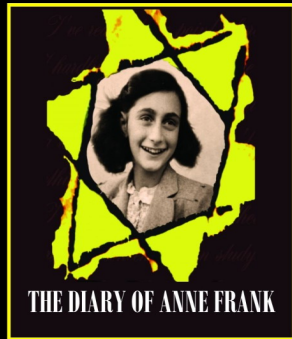
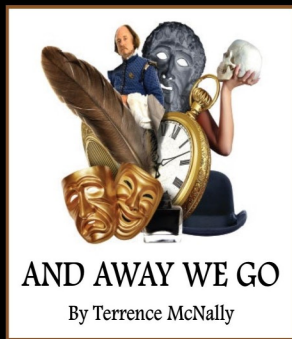
Norwalk.MinutemanPress.com | [Facebook.com/MMPNorwalk](https://www.facebook.com/MMPNorwalk)

CONTRIBUTORS BETWEEN 9/1/2022 AND 9/1/2023

(Includes Members from past MainStage Season)

Robin Ackerman	David Burger	Evan Dunnell	Arlene Gry
Mary Jane Ackroyd	Christopher Burkhardt	Drs. Marcia & William	Susan Haefner
Randy Adams	Suzanne Burkhardt	Eckerd	Dorothy Hafner
Durelle Alexander	Linda Hudson and Randy	John Egan	Calem Hall
Michael Altomare	Burnham	Jack D. English	Jackie Hall
Brooke Amico	Erica Buse	Jerome H. Ewing	Amy R Hamlin
Dylan Amon	Susan M. Byron	Matthew Faber	Chase Hanson
Kelly Anderson	Alyson Cahill	Lisa Fairchild	Norene Hartog
Thomas Angelo	Mr. Timothy Lewis and	Timothy Fasano	Samantha Lee Heilweil
Mary Antonucci	Ms. Alisyn Camerota	Richard Ferguson	Dorit Heimer
Kathy Apy	Kelly CampionSocol	Liz Fitzpatrick	Chip Helm
Jim Arata	Susan Carter	Diane Flagello	David B Heuvelman
Debra C. Argen	Lisa Castillo	Linda Flanagan	Pamela Hill
Gavin Arneth	Anshul Chawla	Cherie Flavin	John Hillner
Anna Aron	Paul & Julie Chelminski	Sara Fliess	Judith Hochstadt
Alexa Aron	Raj Chitnis	Alexandra Fortin	Deb Holleran
Maureen and Dan Aron	Ginger Clark	Lois Fox	Margaret Holton
Geoff and Lynn Ashworth	Clinton Clifford	Dorothy & Jon Fox	Rebecca Hoodwin
John Atkin	John Cody	Michelle Fraenza	Terri Hoops
Maureen Atron	Evan Cohen	Wally Frey	Colin Hosten
Elizabeth Auber	John Hamlin &	Howard Friedman	Paul R. Hunter
Sandra B.	Greg Cole	Ben & Heather Frimmer	Lynne Huxsaw
Marcia Bailin	Erika C Collins	Joannie Greene and	Margaret Kelley and Peter
Nancy Shelton Williams &	Karen Como	Joanne Fuss	Hyman
Beth Titus Baker	Jennifer Connelly	Elaine Ganat	Oleksander Ierenkov
Susan Ball	Jim Corgel	Rishi Ganupa	Dan Guller & Eric James
John Barrymore	Mark Corpron	Paul Garlock	Nikhil Javeri
Diane M Becker	Anthony Crisci	Stuart Garrelick	Robert Jennings
Chris and Terri Bell	Dana Crockett	Susan Garthwaite	Jon & Kim Jodka
Anthony Bellomy	Dennis Culliton	Karen Gasper	Justin Johnson
Ellen Belok	Sam Cushman	Glenn Gately	Denise Johnson
Sandra Benea	Andrea Light & Jack	Joyce Generoso	Anne Kanengeiser
Dr. Garrett Bennett	Cutler	Wendy Gerbier	Jeri Kansas
Hilary Berger	Lee & Concette Cutrone	Mary Gladden	Betty Kaye
Adele Bernstein	Ellen Davis	Jeanne Gnuse	Randye Kaye
Lisa Bettke	Merrie & Maiya & Katie	Jen Goins	Keasler Family
Mamta Bhargale	Deitch	Gold's Delicatessen	Jean Kelly
Mihika Bhatia	Carole Dell'Aquila	Katherine Golomb	Anthony Kesselmark
Dr. Sandra Billings	Susie Denardo	Peter Gould	Bruce Kimmel
Ethan Bindernagel	Janet & Tim Densky	Burton Gould	Mary & Chris Kinney
Stephen Bistran	HOTBOX Swayam	Arlene Graffa	Allen Klein
Sharon Poole and	Deshpande	Kathy Greco	Christine Klimek &
Michael Bittenbender	Bernard Deverin	Ginny and Bob Green	Theodore Klimek
Lynda Bluestein	Eva Dewitz	Elizabeth Greenberg	Betsy Knapp
Carter Bonecutter	Molly Alger and Jay	Donald Greenberg	Joanne Koleszar
George Boyan	Dirnberger	Joannie Greene	Annette Kussmaul
Nancy A. Brown	Irene Dixon	Amy Griffin	Joe Landry
Kimberly & Paul Bryant-	Diane Donovan	Maryann & Lawrence	Annette Landry
Smith	Cade Dugan	Grimaldi	Amy Lang
John Bulgarelli	Tim Dugan	Dorothy Grimm	Greg Lang

Welcome to Curtain Call's 2023 -2024 Season of live theatre!



Join us for our 33rd season!

203-461-6358

www.curtaincallinc.com

Sterling Farms Theatre Complex
1349 Newfield Avenue, Stamford

MTC friends use code MTC and save 10%.

CONTRIBUTORS BETWEEN 9/1/2022 AND 9/1/2023

(Includes Members from past MainStage Season)

Barbara Lencheck	Ken & Susie Ng	Rilling	Lou and Jan Ursone
Max Lesnik	Thomas Nissley	Stephanie Rival	Nancy Usic
Mark Lesnik	Irene & George Nova	Valerie & Ken Roffe	Adam Valentini
Charles Lewis	Daniela O'Callaghan	Barbara & Stuart Rogan	Diane Vanderkroef
Rita & Steve Lewis	Kristen O'Connor	Meryl & Louis Rosenfeld	Wendy Vickrey
Jane Lindau	Brandon Olsberg	Jeff Rosier	Jerusha Vogel
Brendan Logan-Bloom	Linda O'Shaughnessy	Mimi Roth	Sathvik Vuppunuthula
Pamela Hill & Michael	Mary Oster	Ann & Don Rully	Ayush Vyas
Lorr	Dorothy O'Sullivan	Anthony Rumore	Kathleen Walsh
Baudelio Lozano	Mark Overley	Kristen Runk	Kathleen Wannemacher
Lawrence Luongo	Arnav P	Jack Rushen	Wendy Waring
Rainy Broomfield & Bruce	Catherine Pagliaro	Harrison Russman	Angela Wasunna
Mac Nair	Penny Palmer	Becky Ruthven	Anne and Gil Watkins
Shirlee Maddren	Yash Pande	Francisco & Lucila Sabin	A. Michael Weber
Laasya Madiraju	Jo Anne Parady	Annette Sandt	Charles Weidman
Les Madorsky	Elizabeth Parady	Gary Scarpa	Adam Weiss
Maxine Maiocco	Mary Parrotta	Abigail Scherr	Joan and Marshall Weiss
Mary Makowka	Marisa Parrotta	Mark Schiff	Elizabeth Wernqvist
Claire Mann	Jamie Parrotta	John Schilling	Mike Mushak & David
Carolyn Marble-Weuling	John Parrotta	Gigi Schmidt	Westmoreland
Matthew Mardula	Lauren Parrotta	Carol Schnaer	Vonne Whittleton
Sheila Martenson	The Parrotta Family	Susan Schulz	Penny Wickey
Virginia Martin	Margo Parson Shea	Diane & Steven Shaby	Joan Wright
Dave and Ann Matlow	Bruce R. Peabody	Ruth Ann Shay-Johnson	Joe Xiang
Barbara McAree	Lynne Penczer	Jon Sichel	Janet Zeitler
Catherine McAree	Joan Pendergast	Dr. Henry Rapp, III &	Bruce & Nancy Zepke
Paulette Oliva & Peter	AJ Penna & Son	Jonathan Sichel	
McClung	Construction	Erika Silliman	
Sean and Brenda McGee	Valerie Perlman	Josh Sims	
Catherine McGrath	Ellen Petrino	Shiv Singh	
Bryan Melvin	Joanne Phillips	DJ Sirota	
David Memmott	Bill Pierz	Diane Sirota	
Lydia Menendez	Sangeetha Pinnamareddy	Karen Sloan	
John and Sharon Miller	Rohit Pisipati	Kirsti & Jay Spadone	
Susan Miller	Chris Place	Jackie & Pete Spera	
Steve Mitchell	Wade Podlich	Deborah Spinola	
Mary Beth Mollica	Alena Poirier	Carol Stein	
Julia Monahan	Anne Pollack	Elvira Stepinoff	
Ashley Mondestin	Traci & Jeff Provost	Alice E. Stokes	
Mongillo Family	Edward A. Pulice MD	Gail Stone	
Abhishek Murlu	Gene Qualman	Residence at Summer	
Diane Murray	Martin Ragonese	Street	
Edward J Musante	Rebecca Raiser	Michele Sweeney	
Bill Nabel	Maryann Ferrara Ramos	Gregory Sweeney	
John Messmore & Pat	Lawrence Altman &	Ira Tau	
Nave	Gregory Rayner	Bradley and Denise Troy	
Marjorie Neaderland	Marilynn Reed	Tsantilas Family	
Edward Nesta	Marty Resnick	Cynthia and Stan Twardy	
Lynnette Neupauer	Mauricio Reves	Gary Cosgrave and Dina	
Tim Newton	Mayor & Mrs. Harry	Upton	



Greg Cole - Piano Tuner/Technician

I offer the exceptional to draw out the best
www.gregcolepianotuner.com





Home Team Advantage
AT COMPASS

Exceptional Real Estate Advisors
in Fairfield County

WHO'S WHO IN THE CAST



Joan Wright



Ellen Fusco



John Foran



Ginny Kelly

“YOUR HOME IS OUR STAGE”

HomeTeamAdvantage@Compass.com

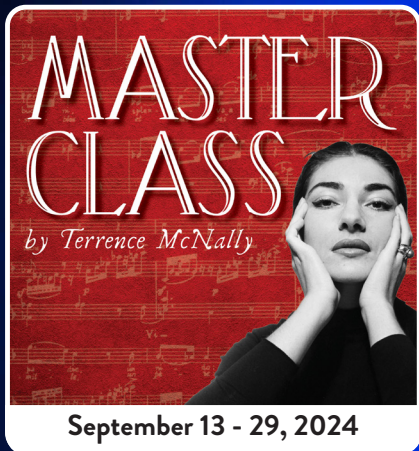
203.293.0293

COMPASS

Home Team Advantage is a team of real estate licensees affiliated with Compass Connecticut, LLC, a licensed real estate broker and abides by Equal Housing Opportunity laws.

Don't Just Observe Theatre. Experience It!
Fairfield County's Professional Award-Winning Theatre Company

MUSIC THEATRE OF CONNECTICUT
MTC MAINSTAGE
2024/2025 SEASON



MASTER CLASS
by Terrence McNally

September 13 - 29, 2024

The poster features a woman with her hands on her face, set against a red background with musical notes and a piano keyboard.



Irving Berlin's
White Christmas
THE MUSICAL

December 5 - 22, 2024

The poster depicts a snowy winter landscape with a cabin and mountains under a starry sky.



Ken Ludwig's
MOON OVER Buffalo

February 7 - 23, 2025

The poster shows a crescent moon with a woman's profile inside it, set against a dark blue background with stars and a red curtain.



LA CAGE
aux
FOLLES

April 4 - 19, 2025

The poster features the title in a glowing pink neon font against a dark, textured background.

SUBSCRIBE TODAY for the Best Seats at the Best Price!
Purchase tickets for individual shows beginning June 3.

MTC MAINSTAGE 509 Westport Avenue in Norwalk, CT
203.454.3883 musictheatreofct.com